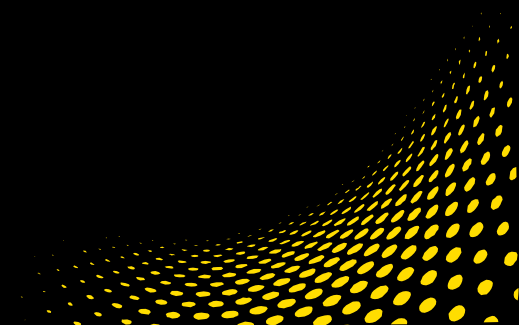
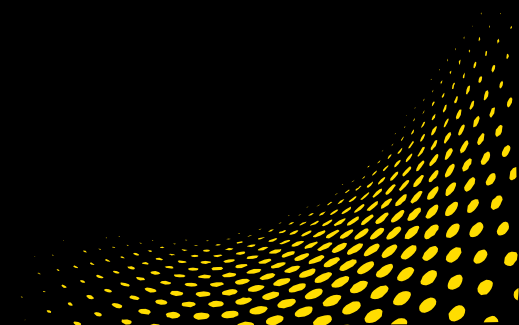


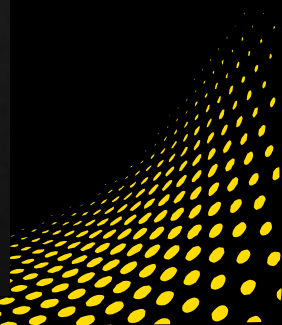
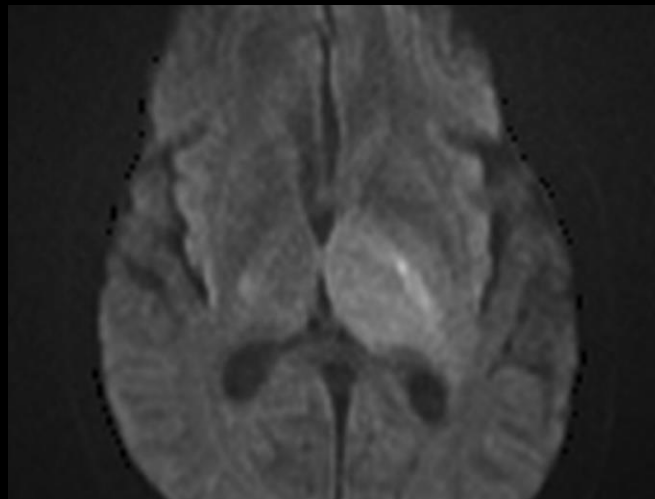
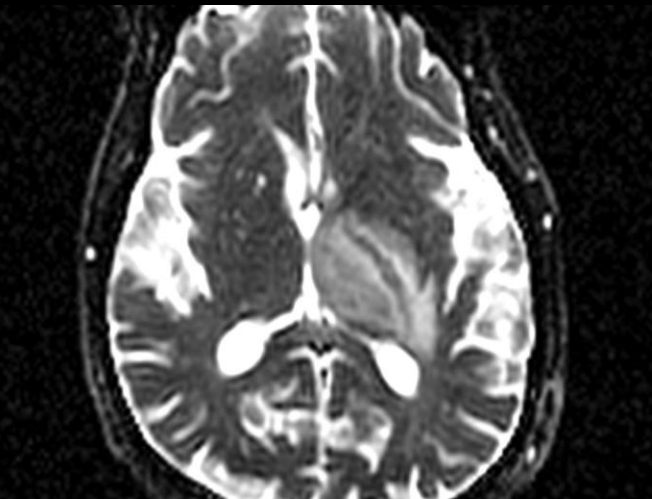
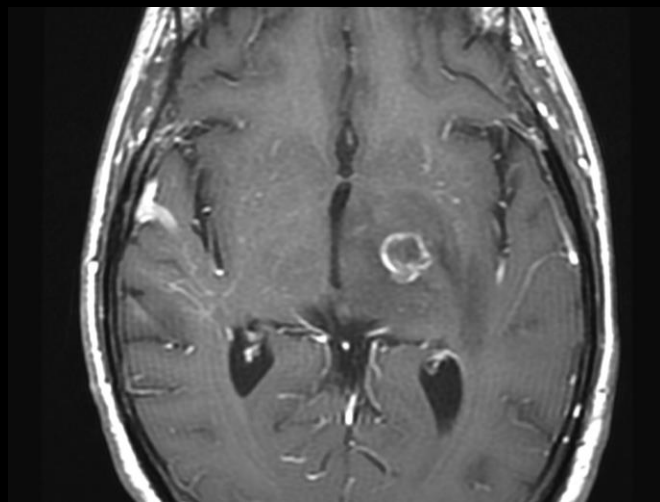
RSNA Sunday Night Film Panel 2016



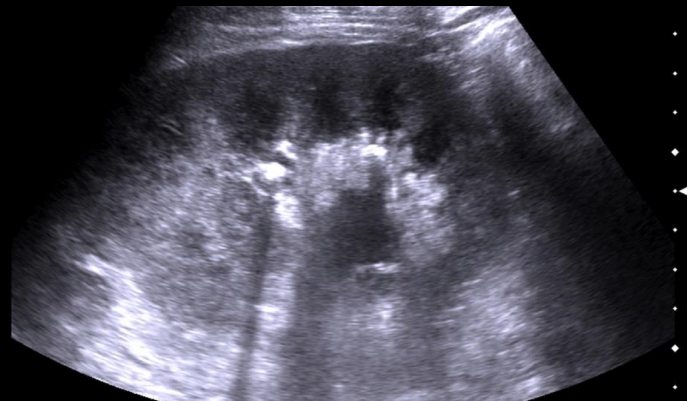
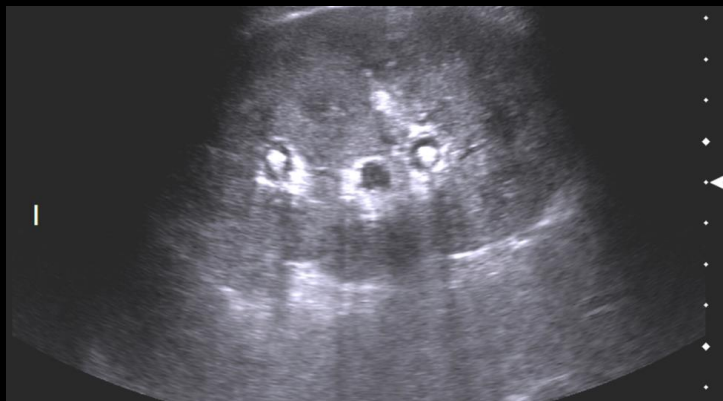
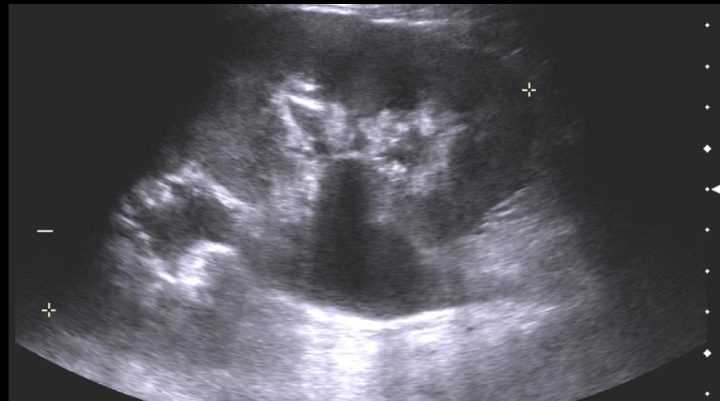
Abdominal Case #1

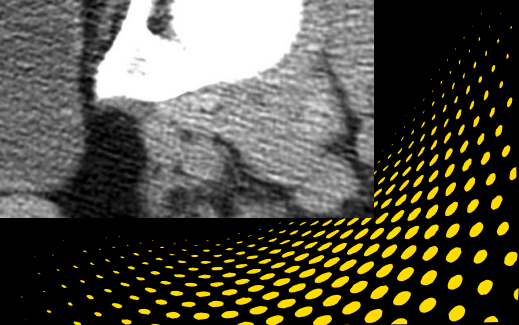
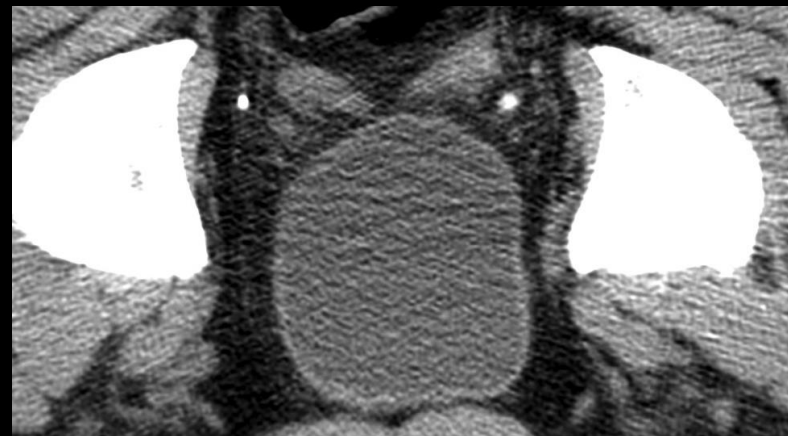
49-year-old male with
presents to SFGH with
altered mental status

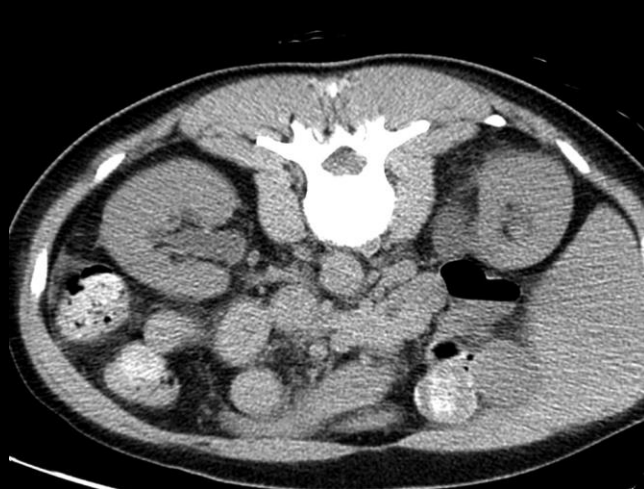
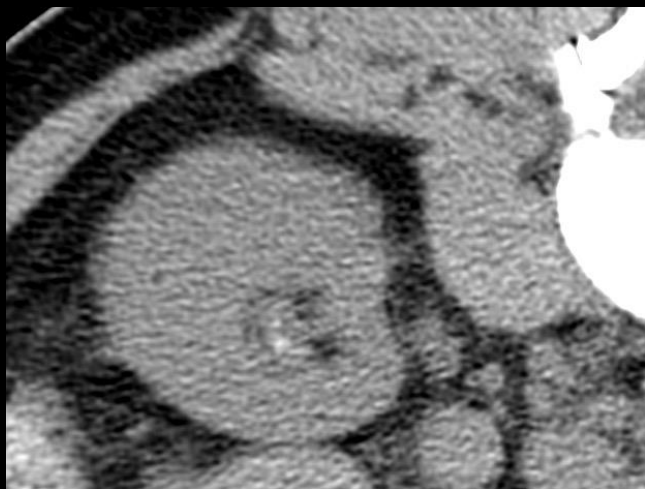




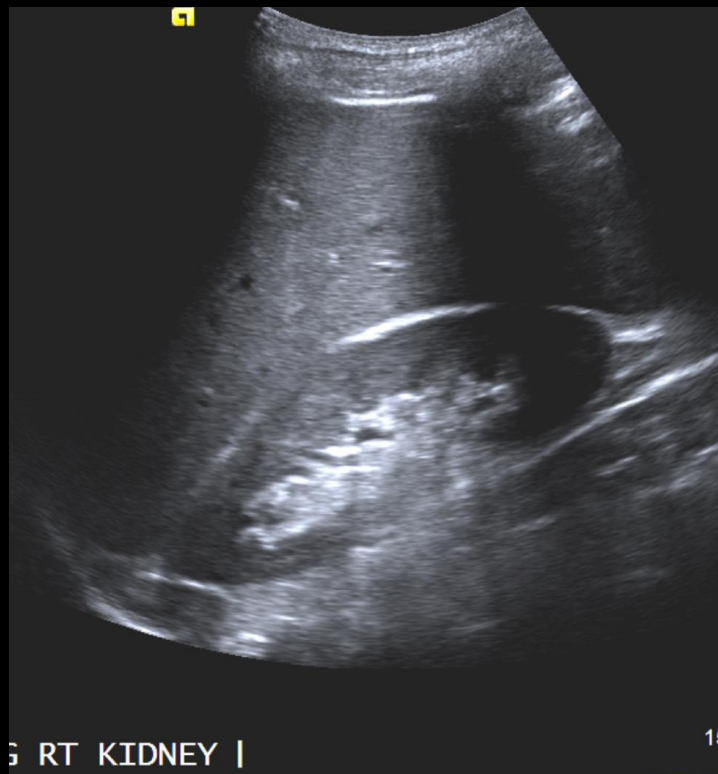
Ultrasound a few days later





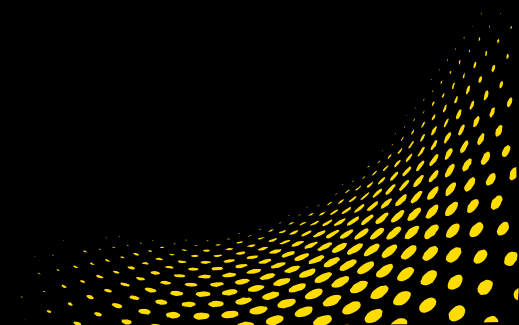


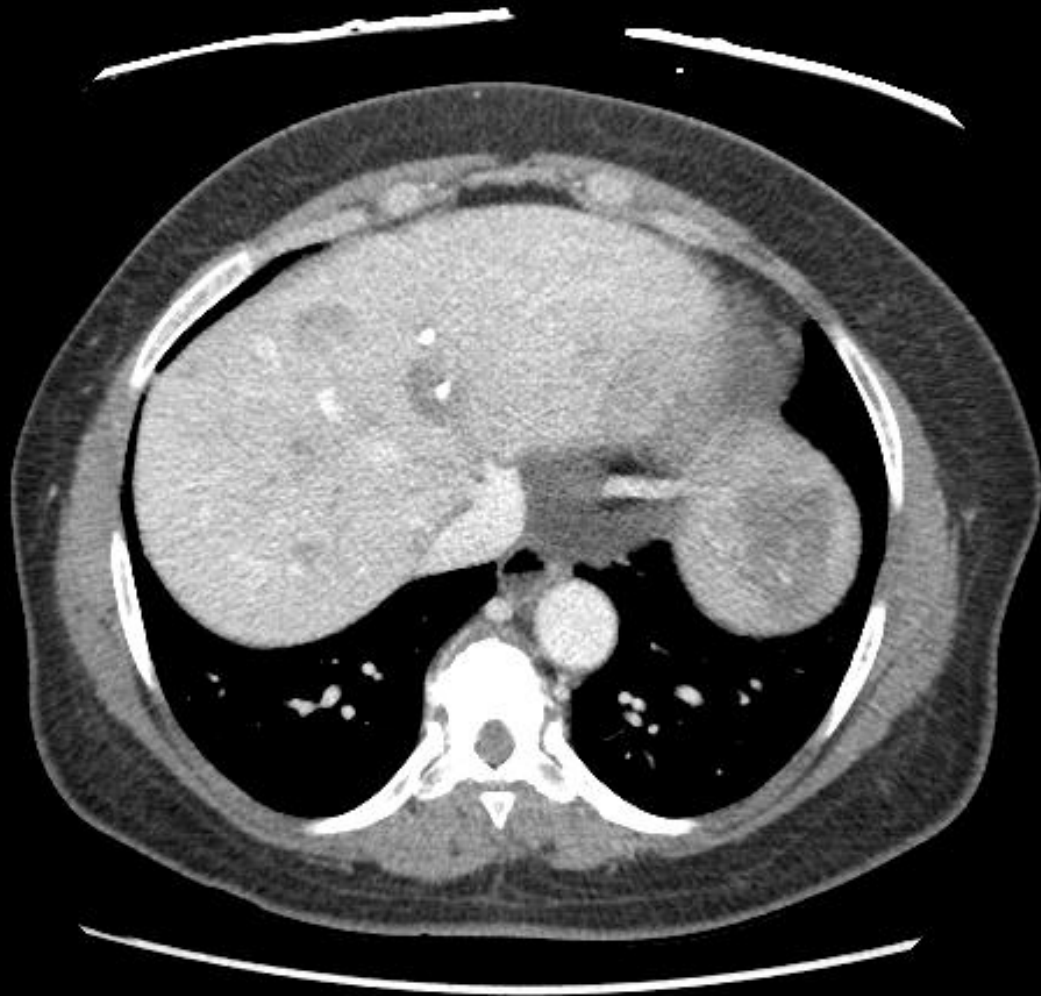
6 months later

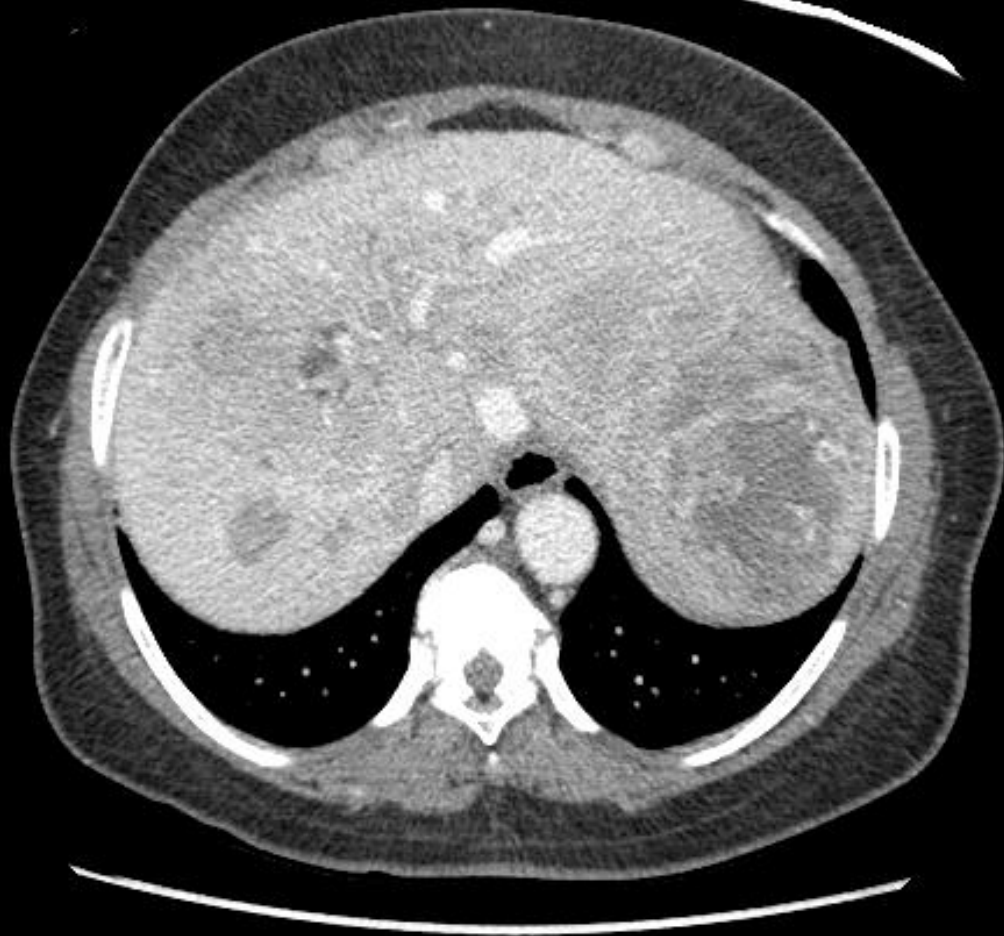


Abdominal Case #2

50-year-old female
with abnormal liver
function tests





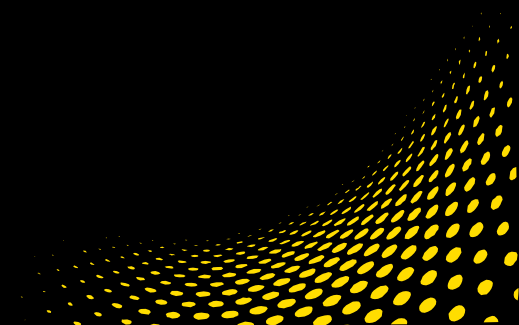






5 minute
delay



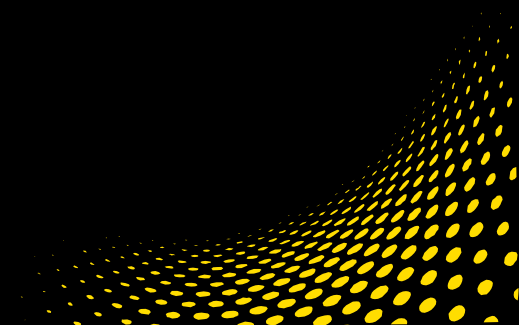


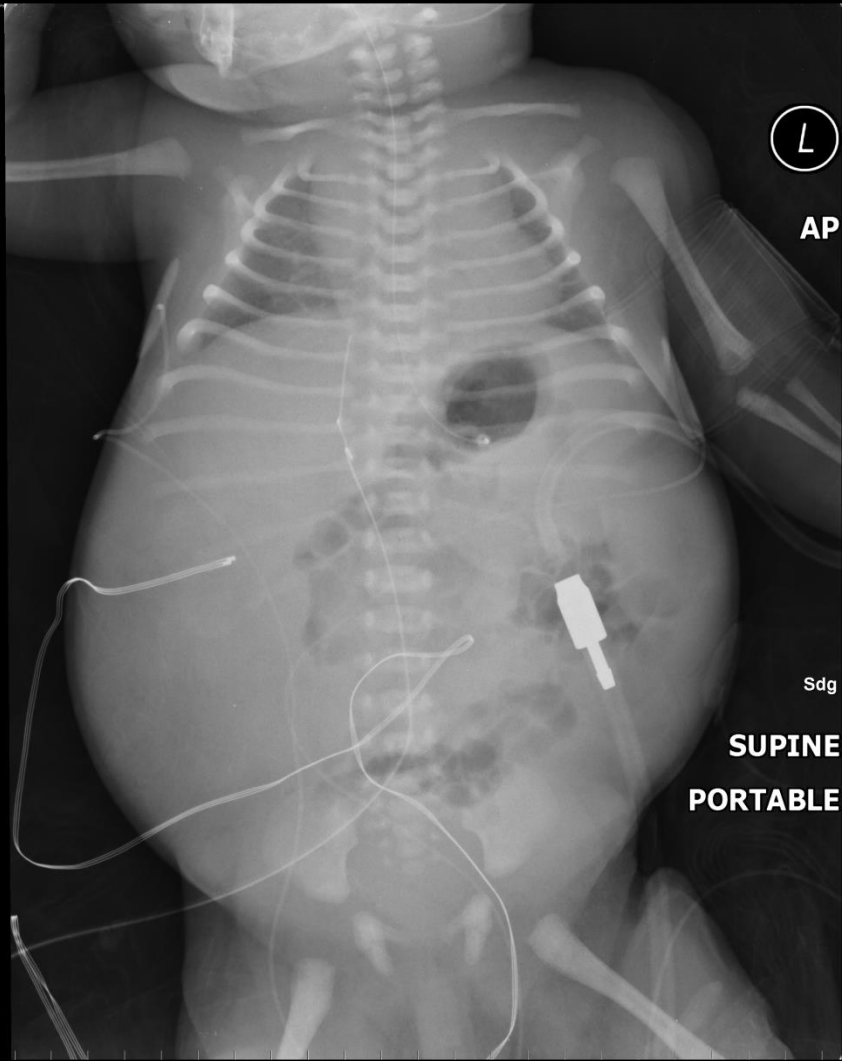


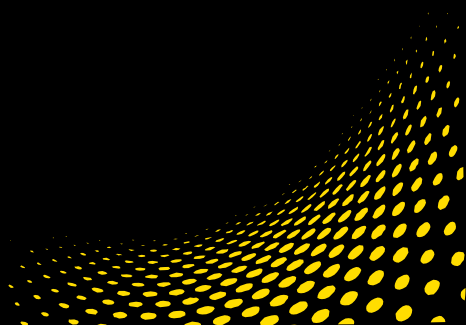


Pediatric Case #1

1 day old female

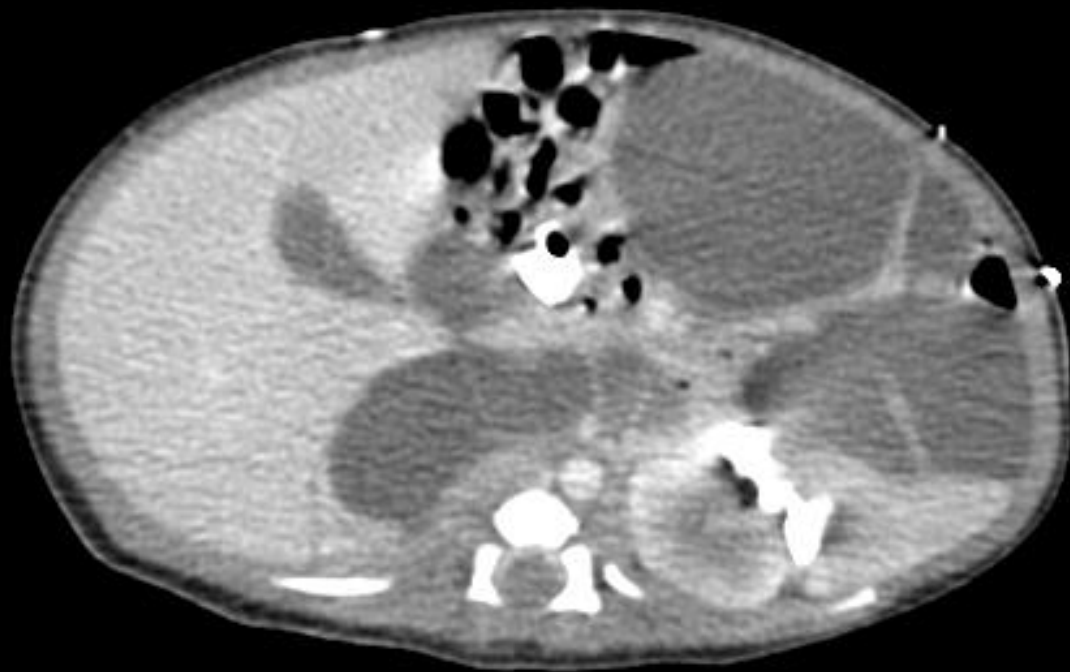


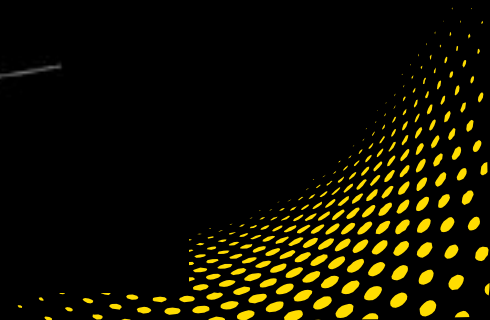
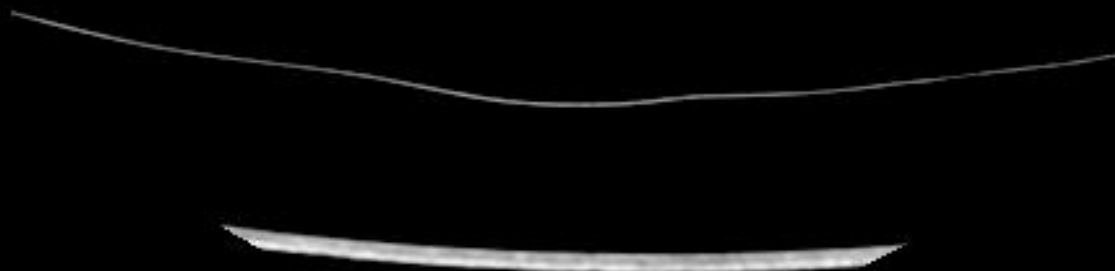
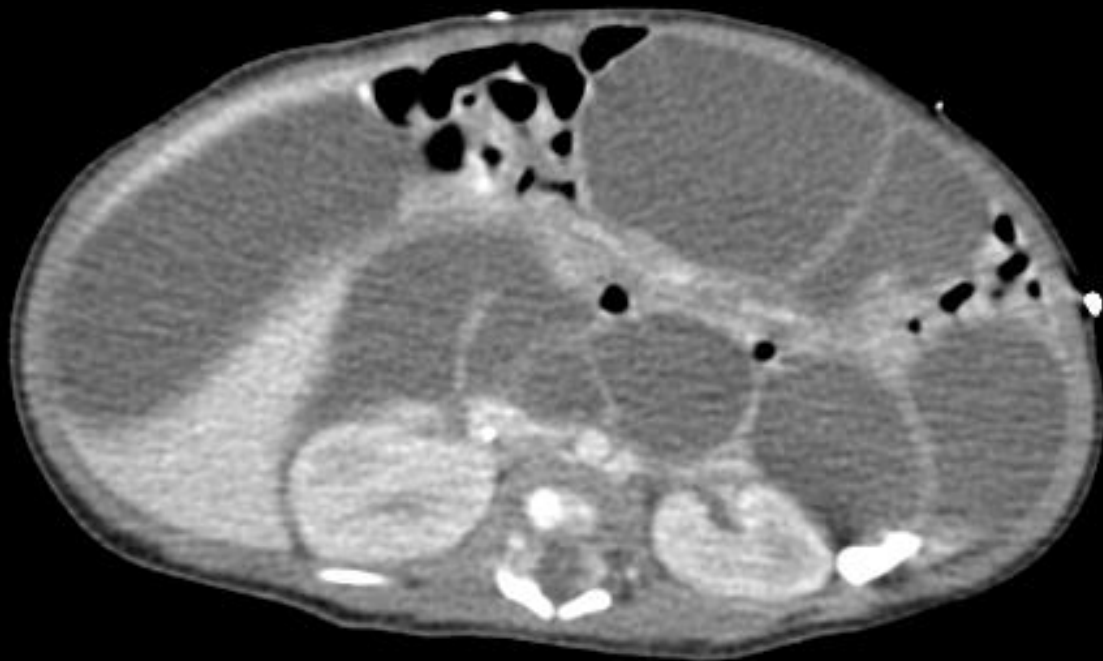


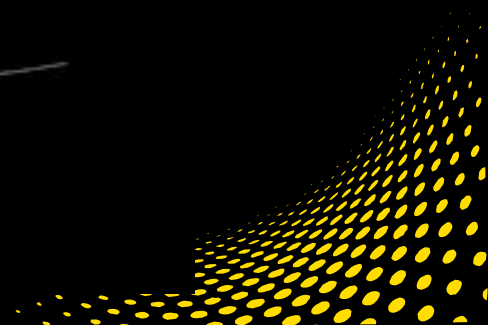
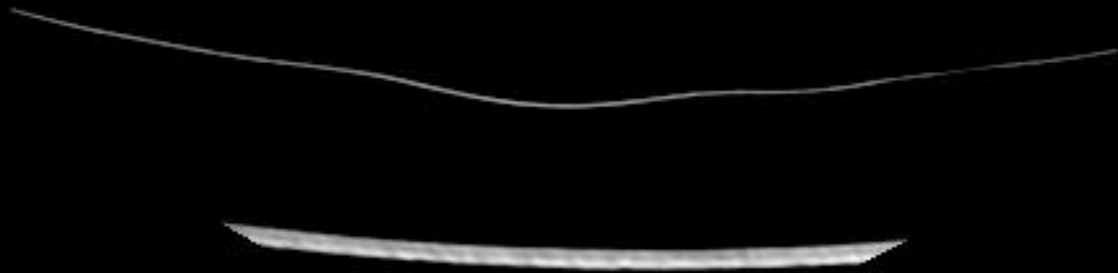
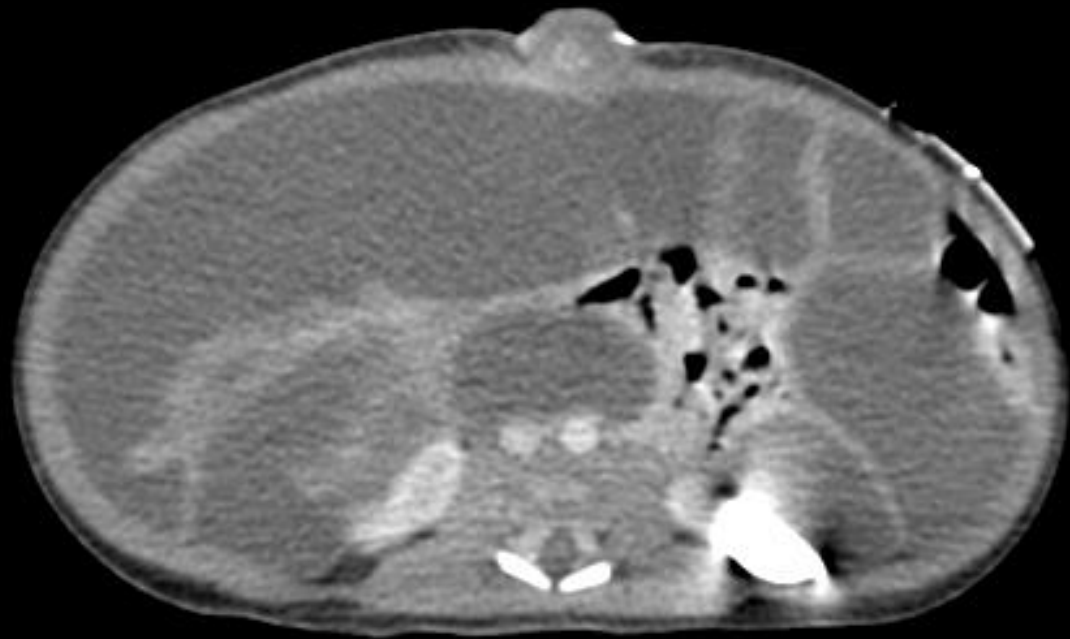


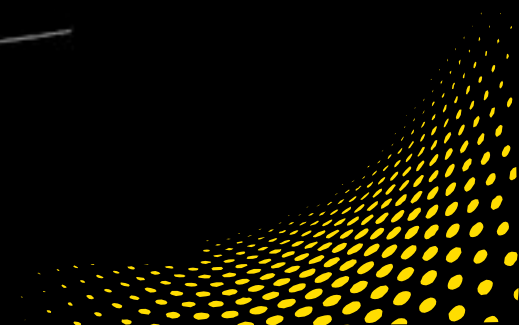
PORTABLE







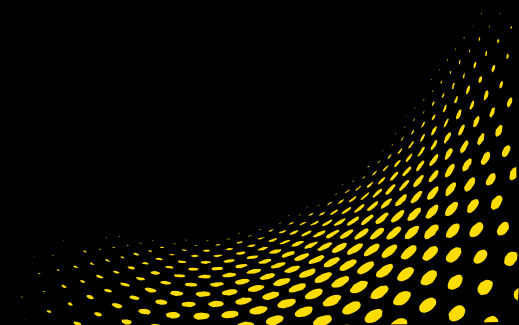


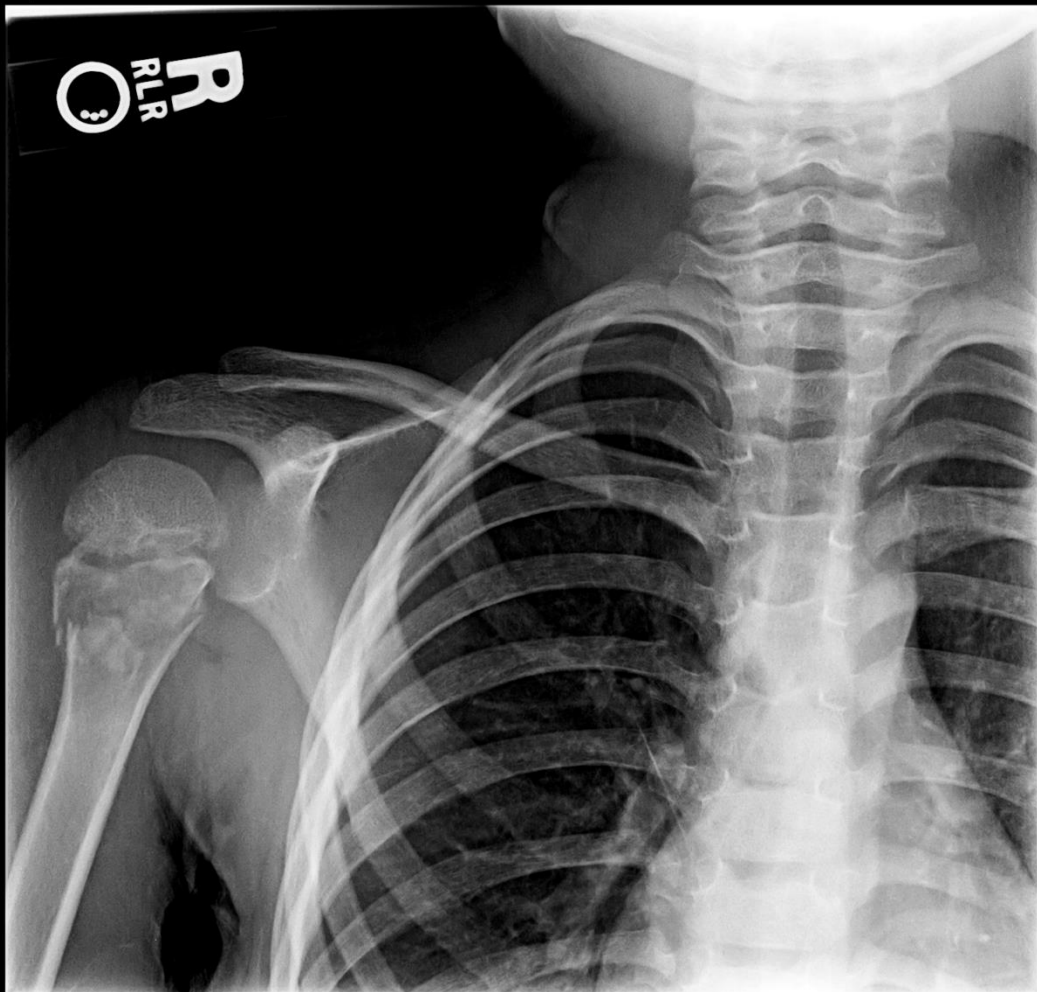




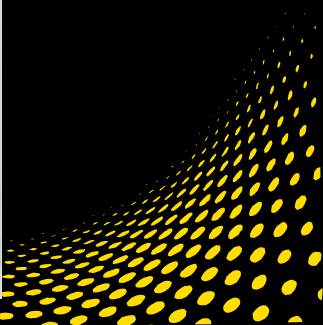
Pediatric Case #2

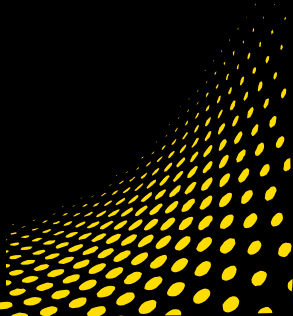
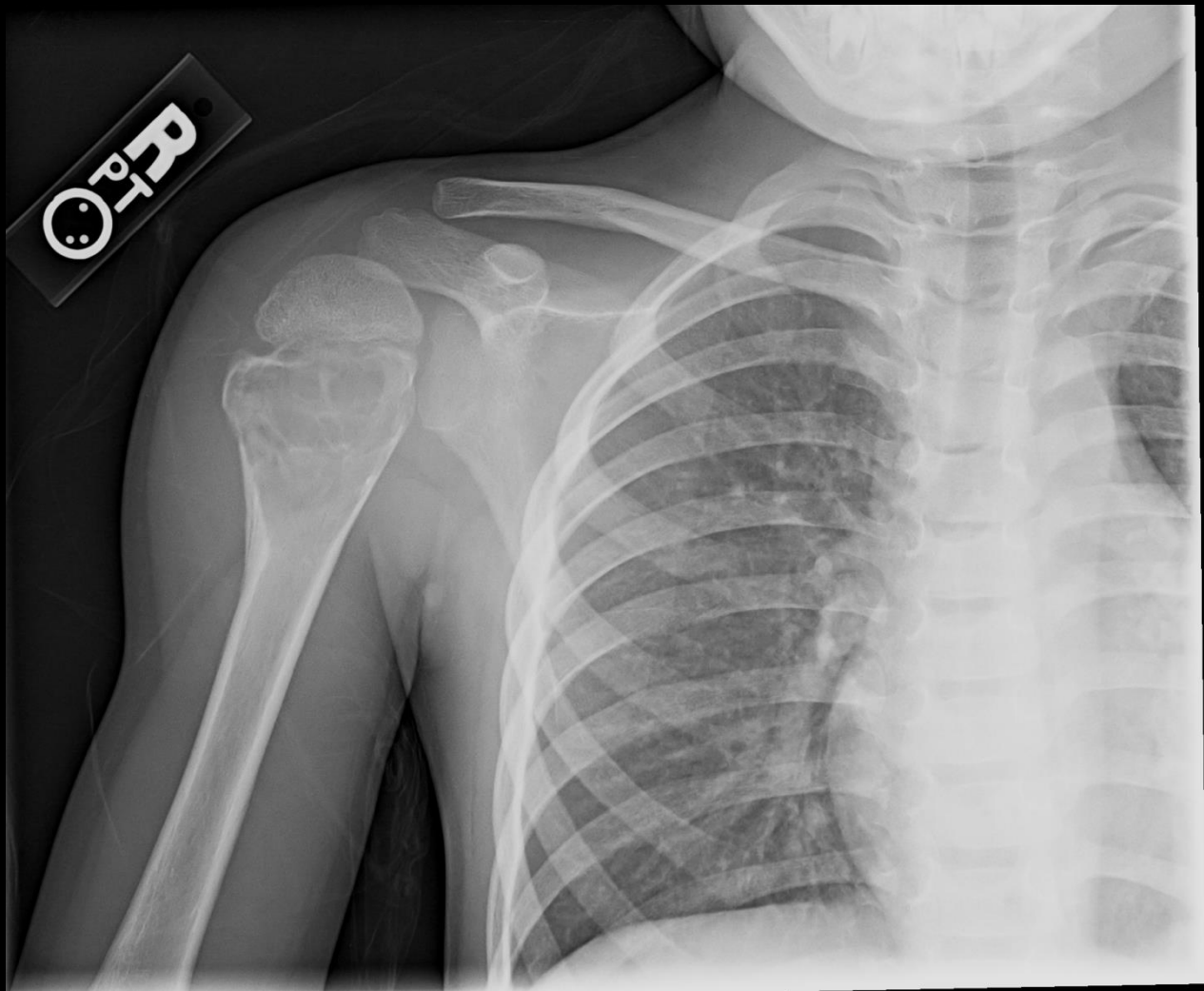
7-year-old male
with arm pain

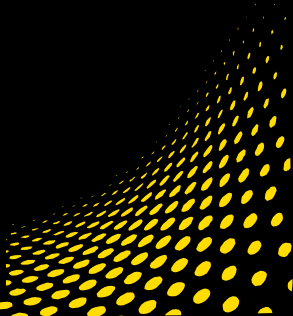
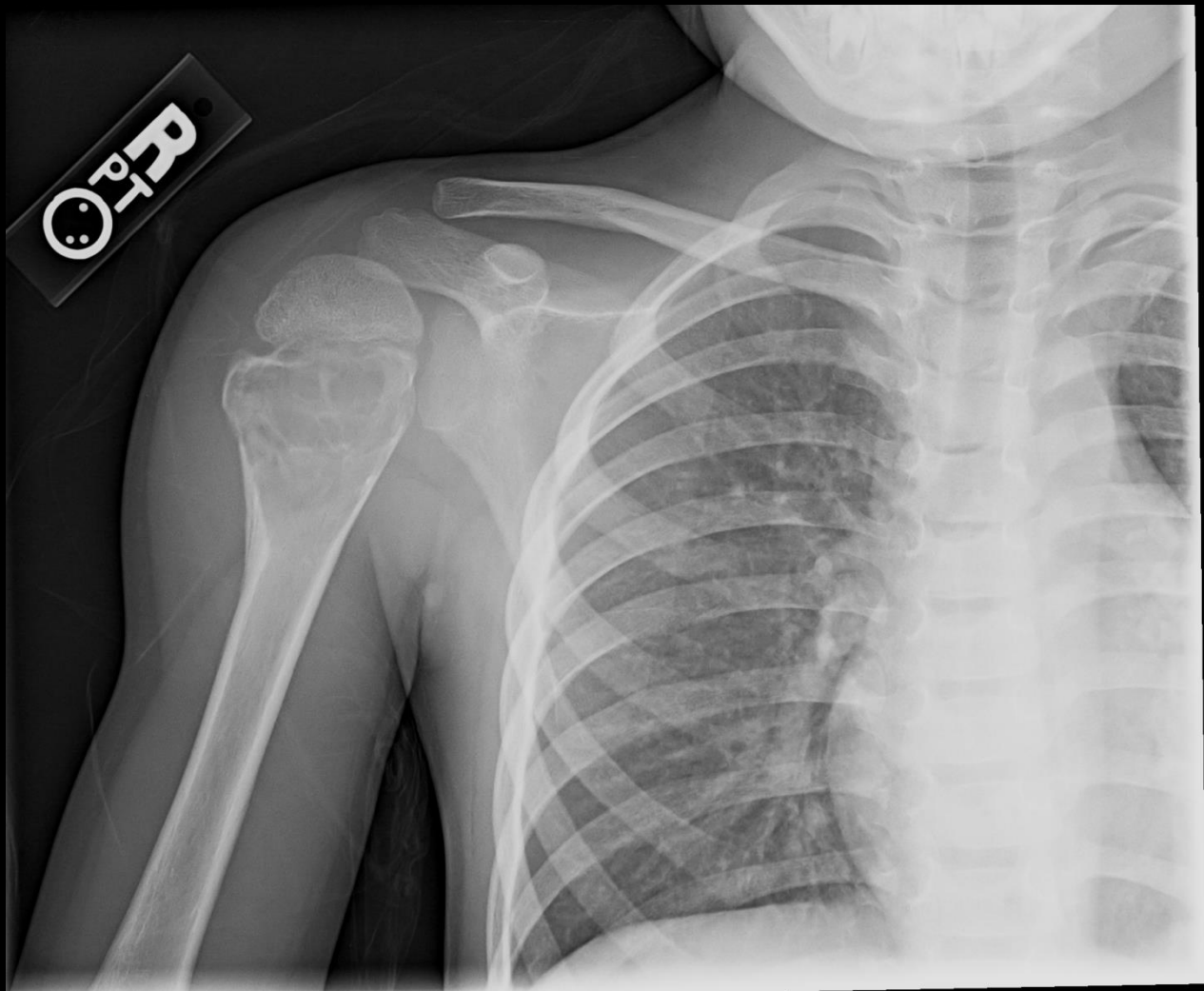


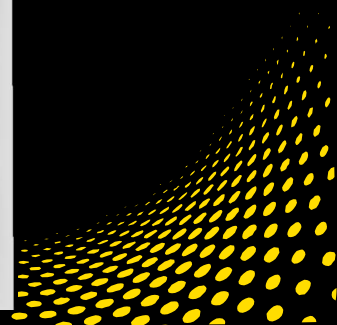


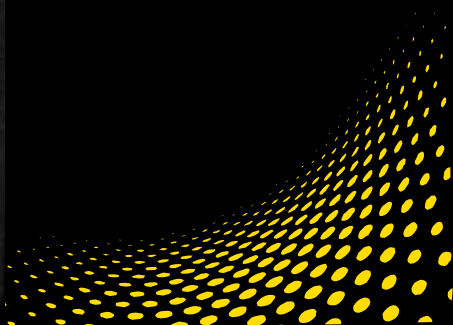
R
RLR
O

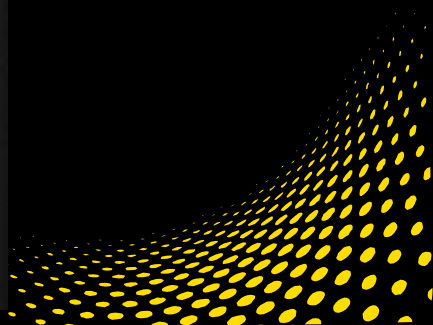


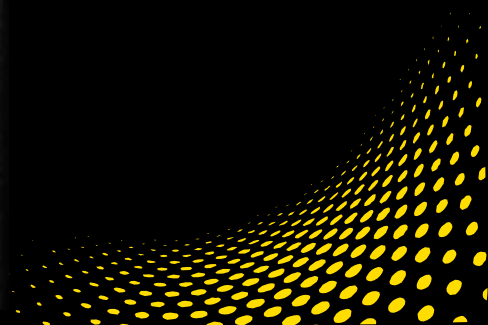


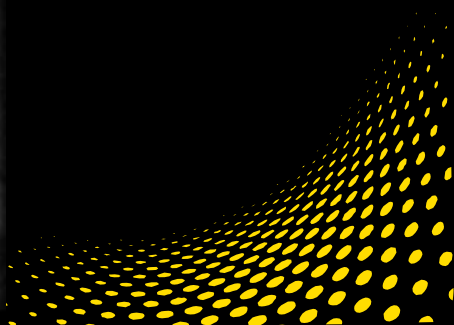
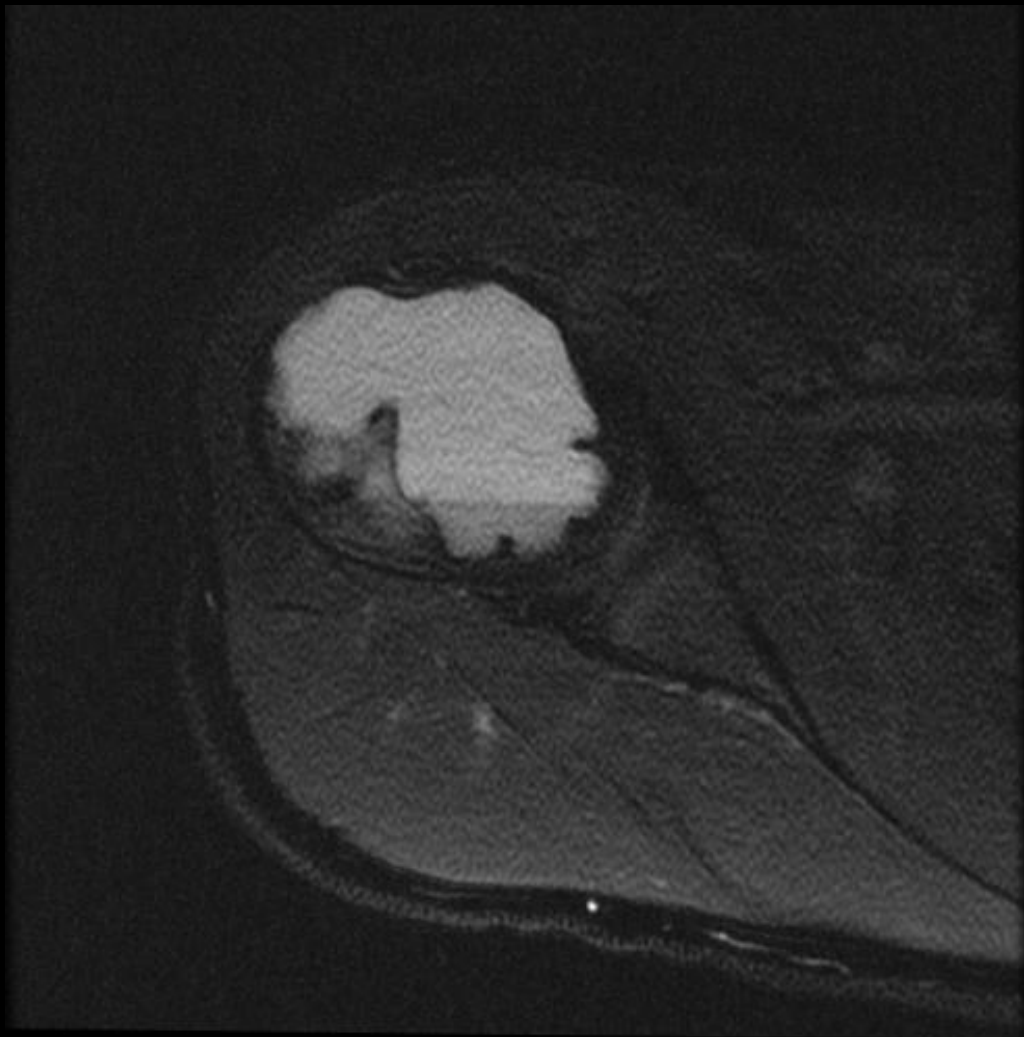


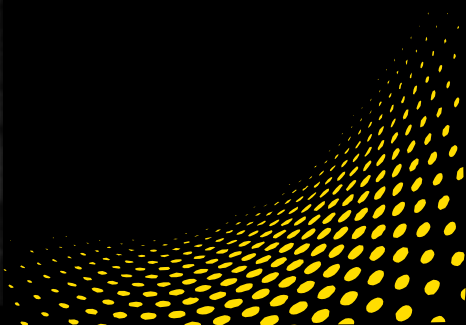
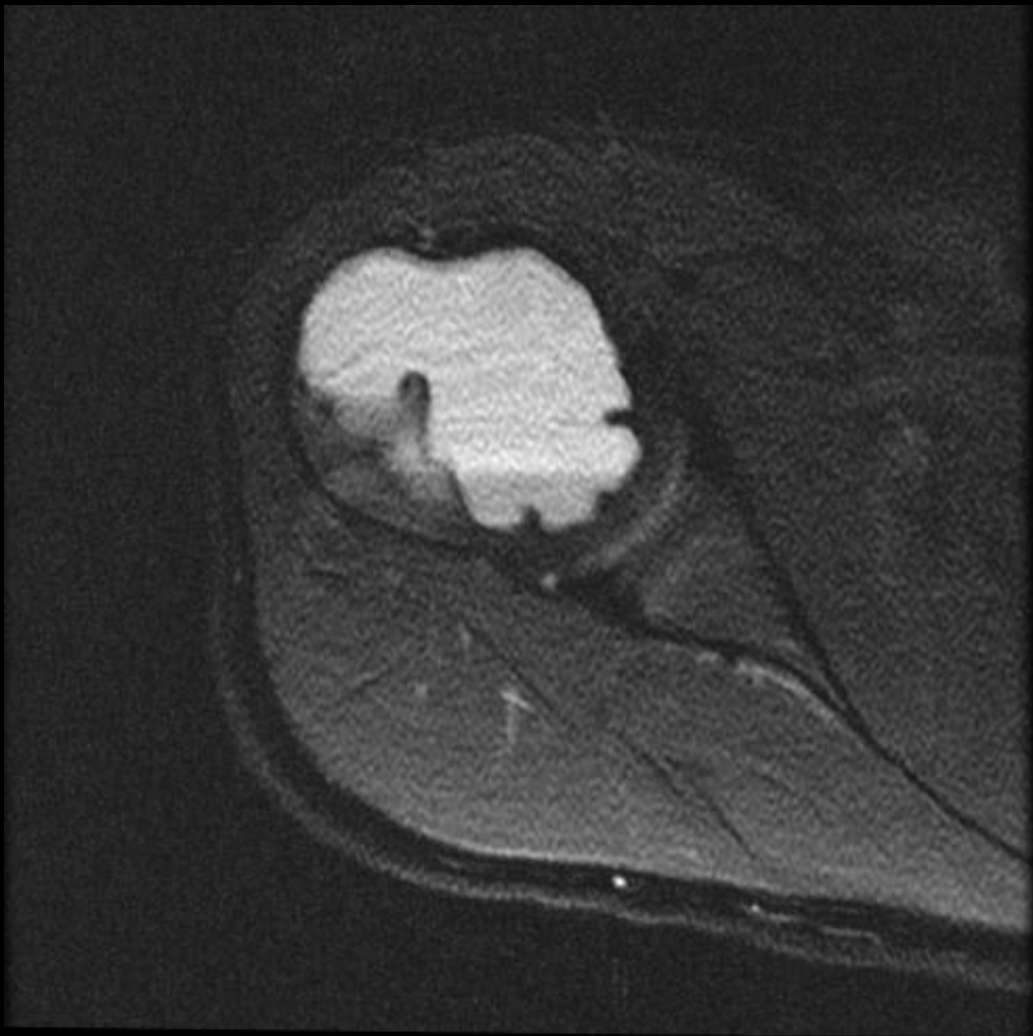


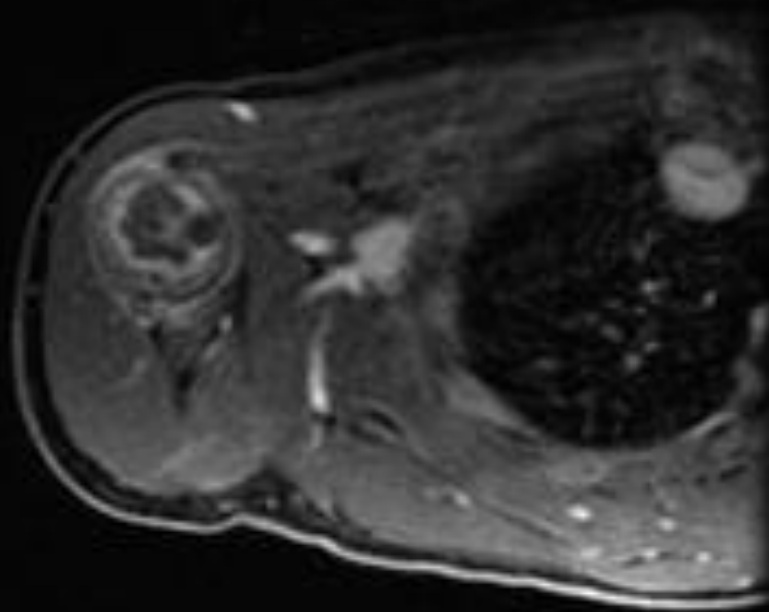


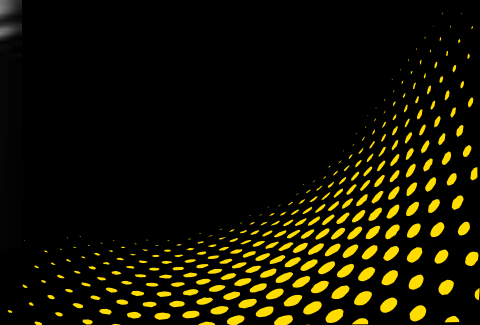
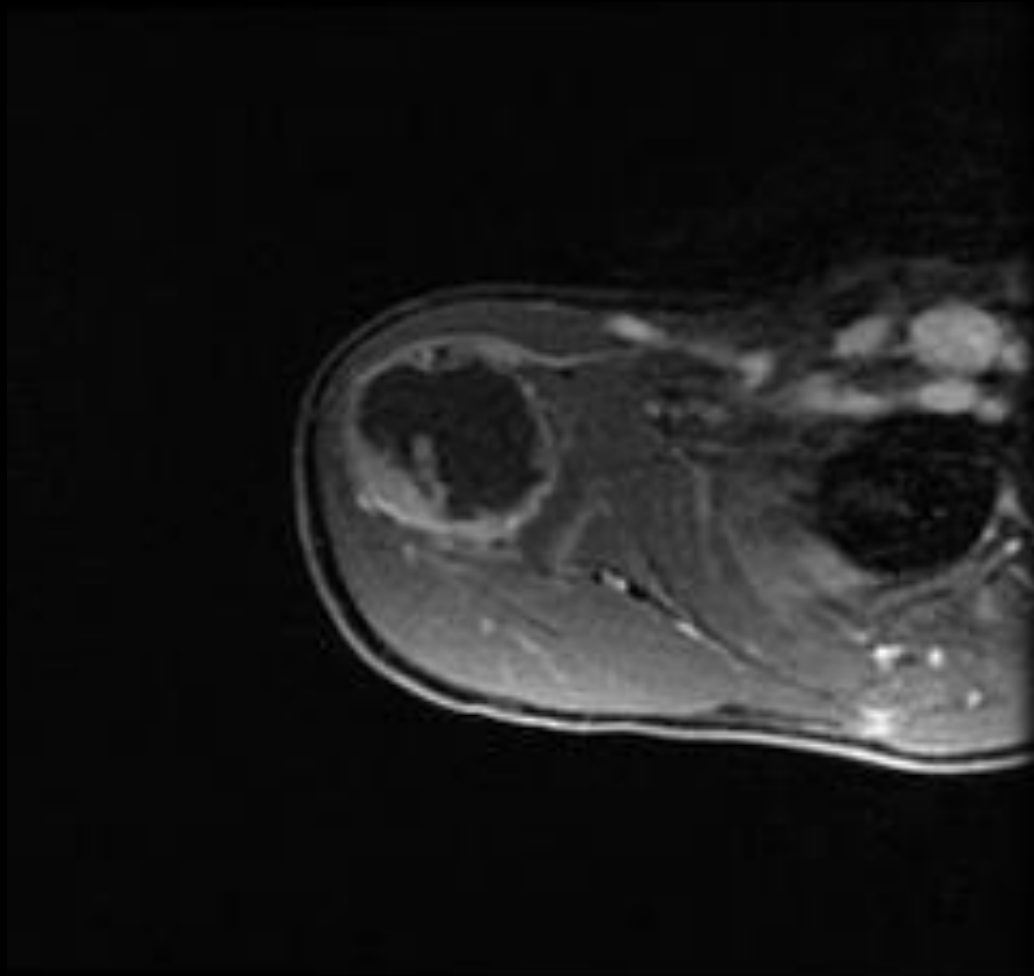


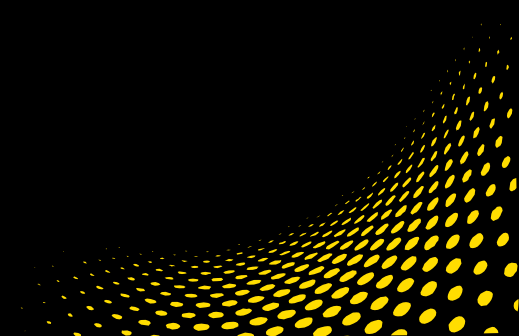
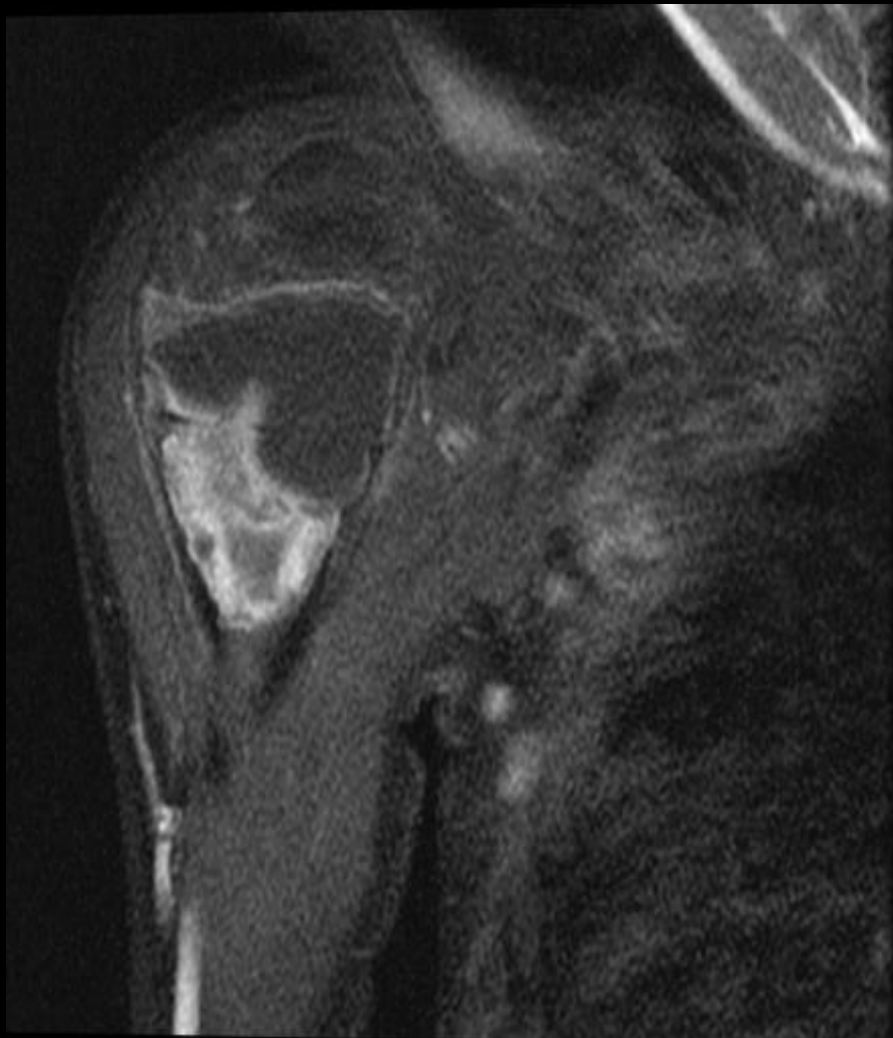


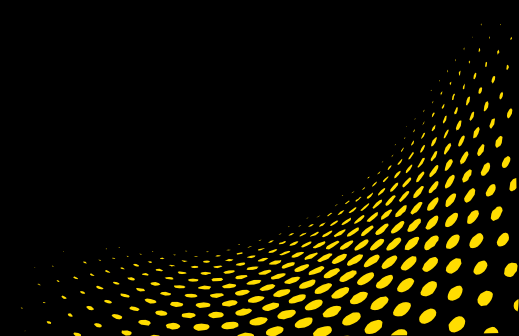


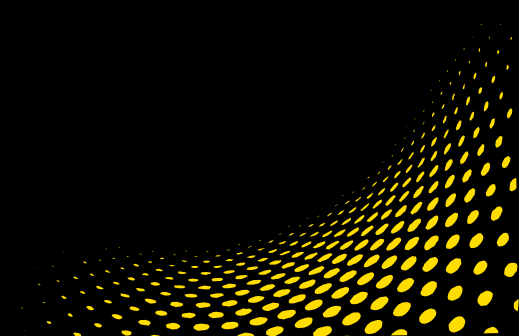
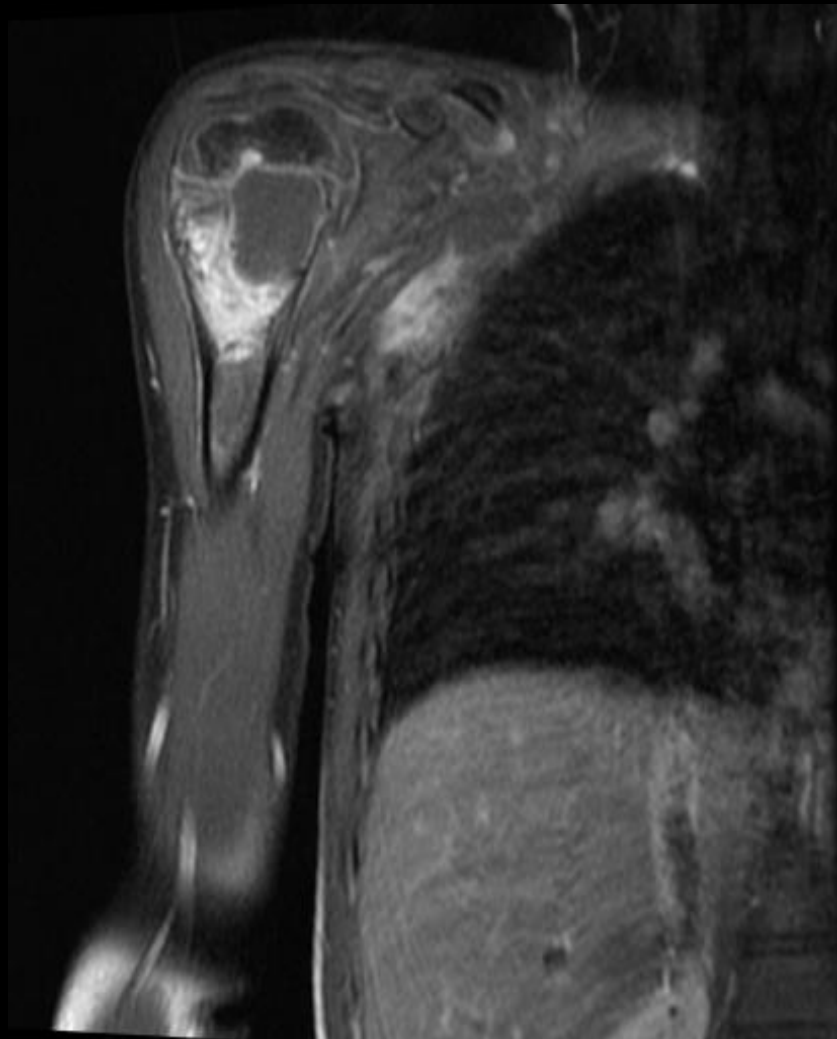






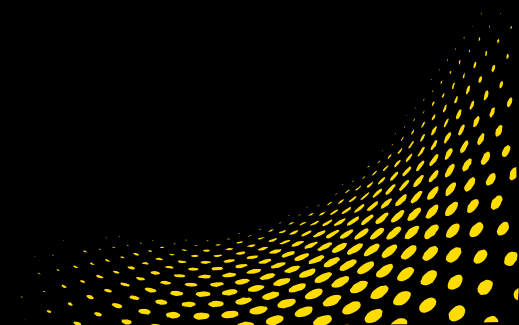






Musculoskeletal Case #1

57-year-old woman
with short stature



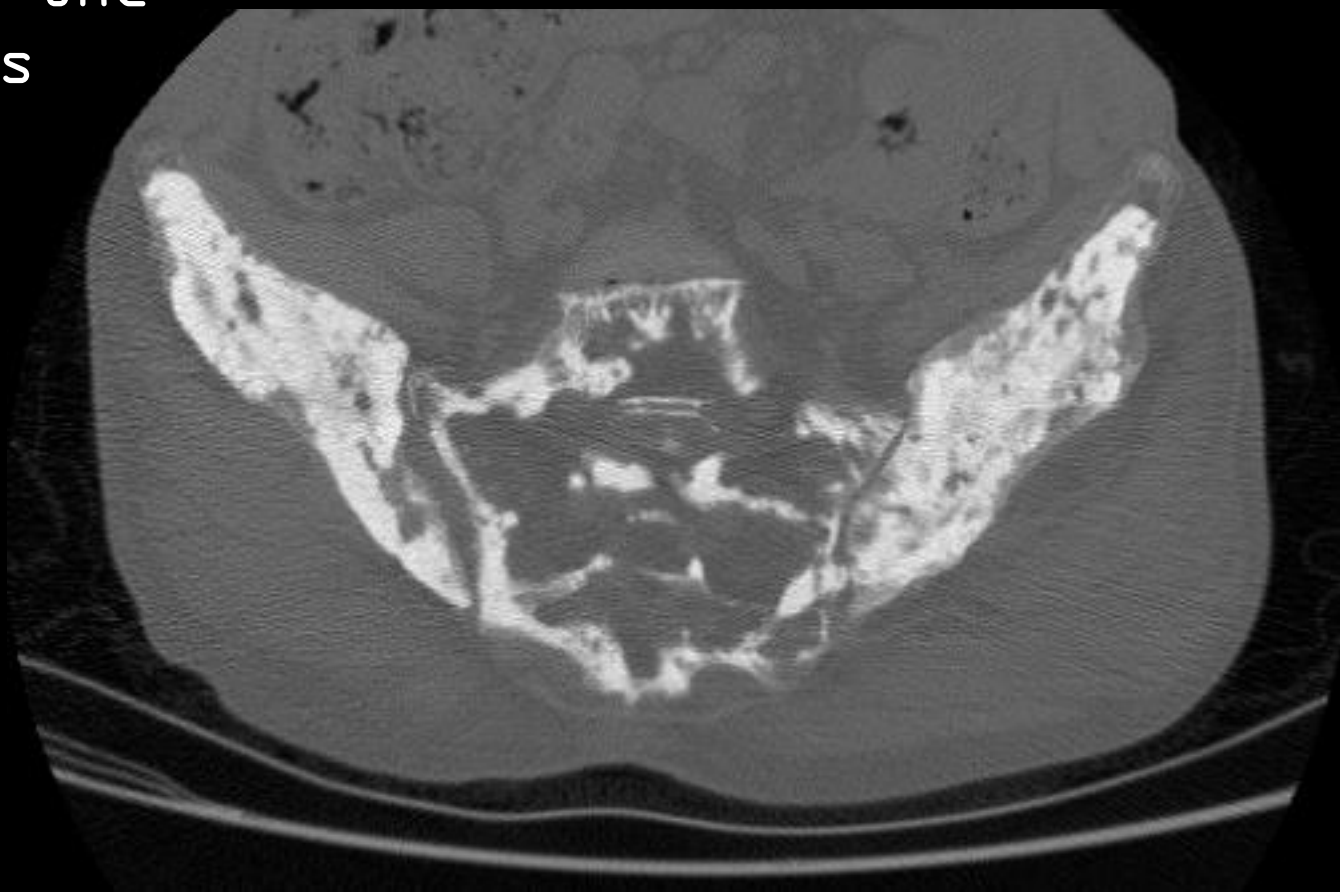
Radiographs of bilateral humerus



Radiograph
of the
pelvis



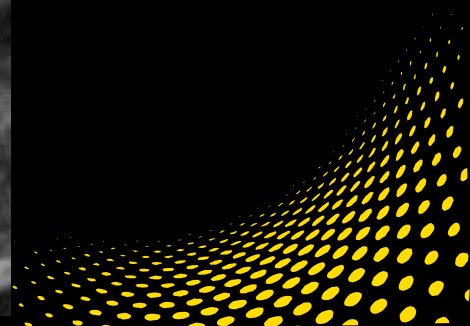
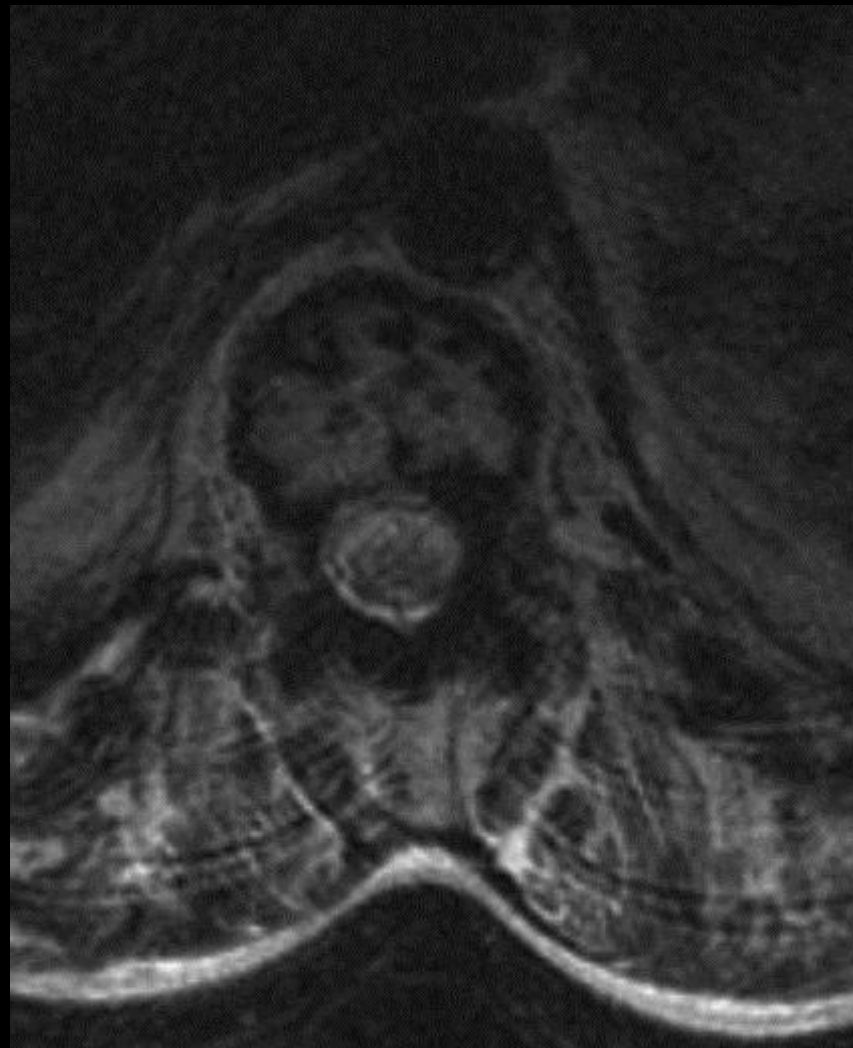
CT of the
pelvis



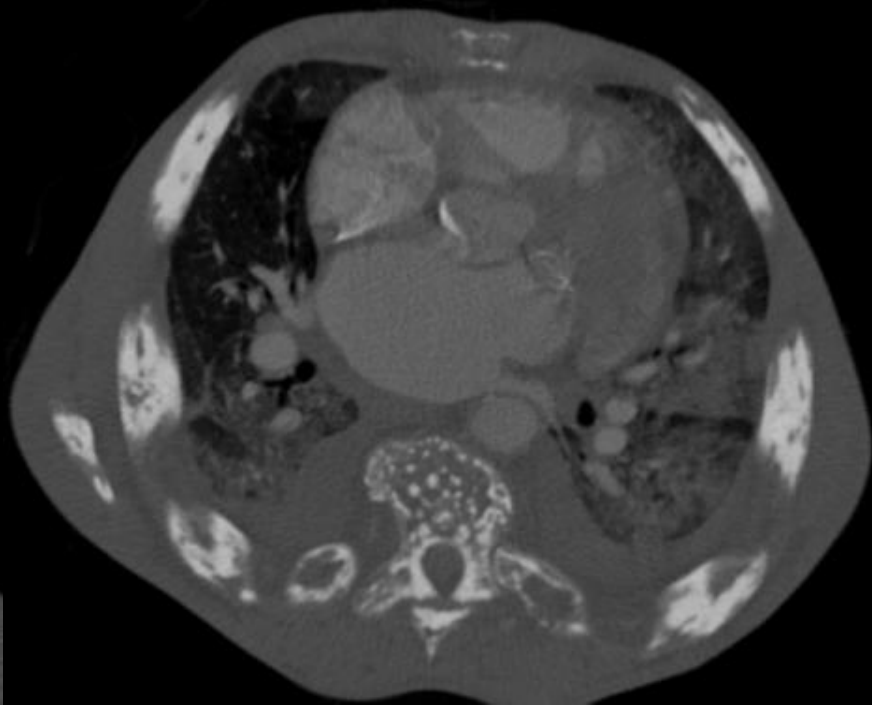
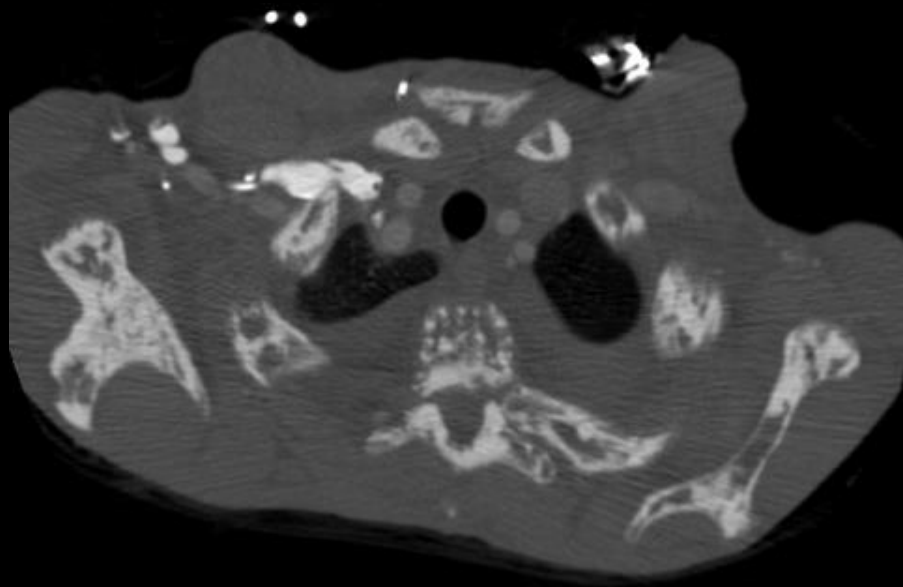
MRI of the spine



MRI of the spine

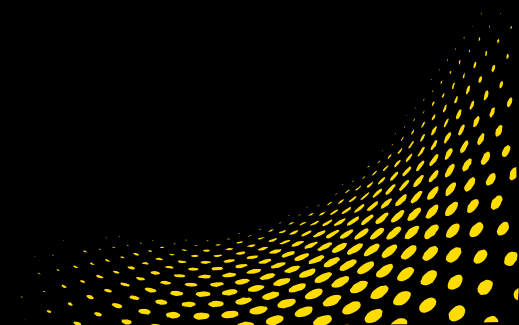


CT of the
chest



Musculoskeletal Case #2

18-year-old man
with stiffness



Radiographs of bilateral feet



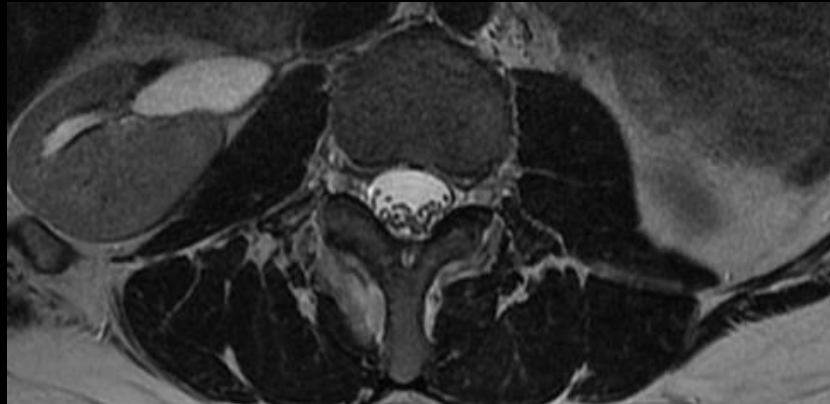
Radiographs of bilateral hands



MRI of the
spine
(axial
images,
T1+/- Gd,
T2)



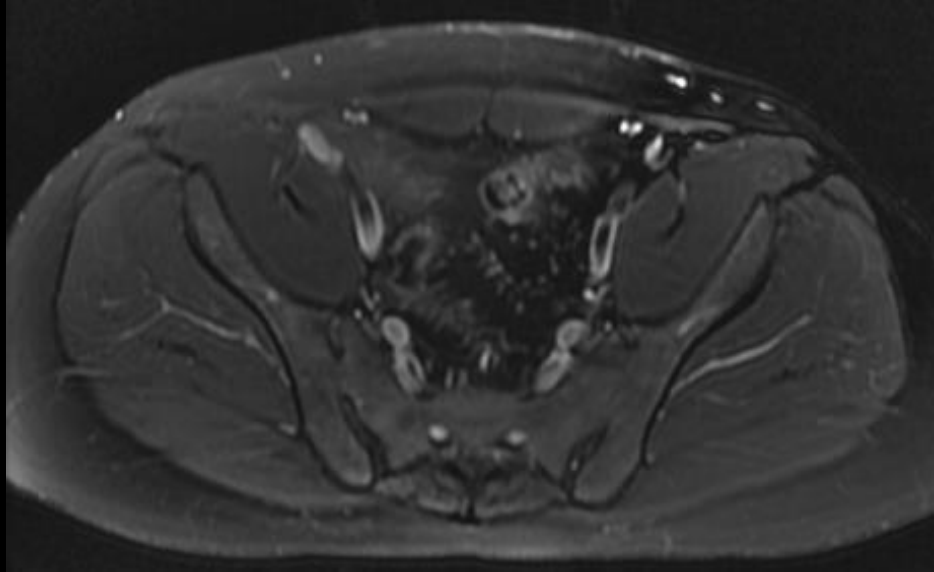
Patient had a
biopsy of the
right kidney
when he
was a young



a.p.
scoliosis
film of the
spine

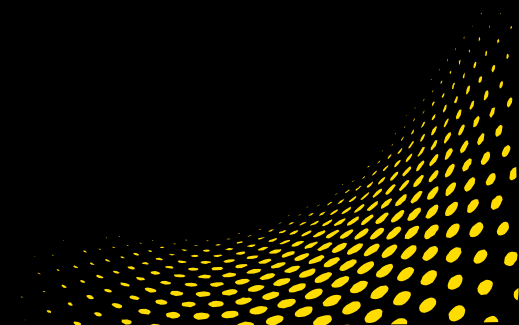


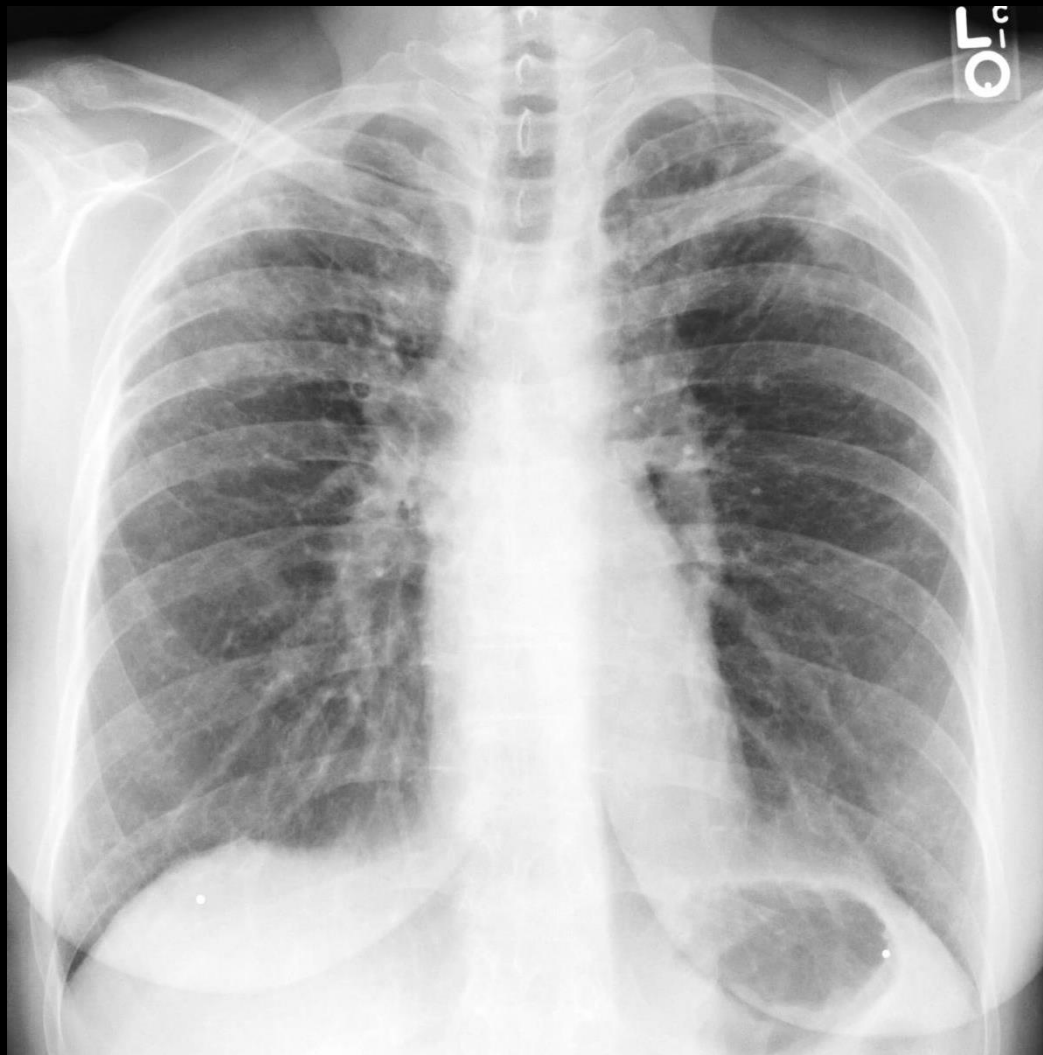
MRI of the pelvis



Chest Case #1

57-year-old
female: baseline





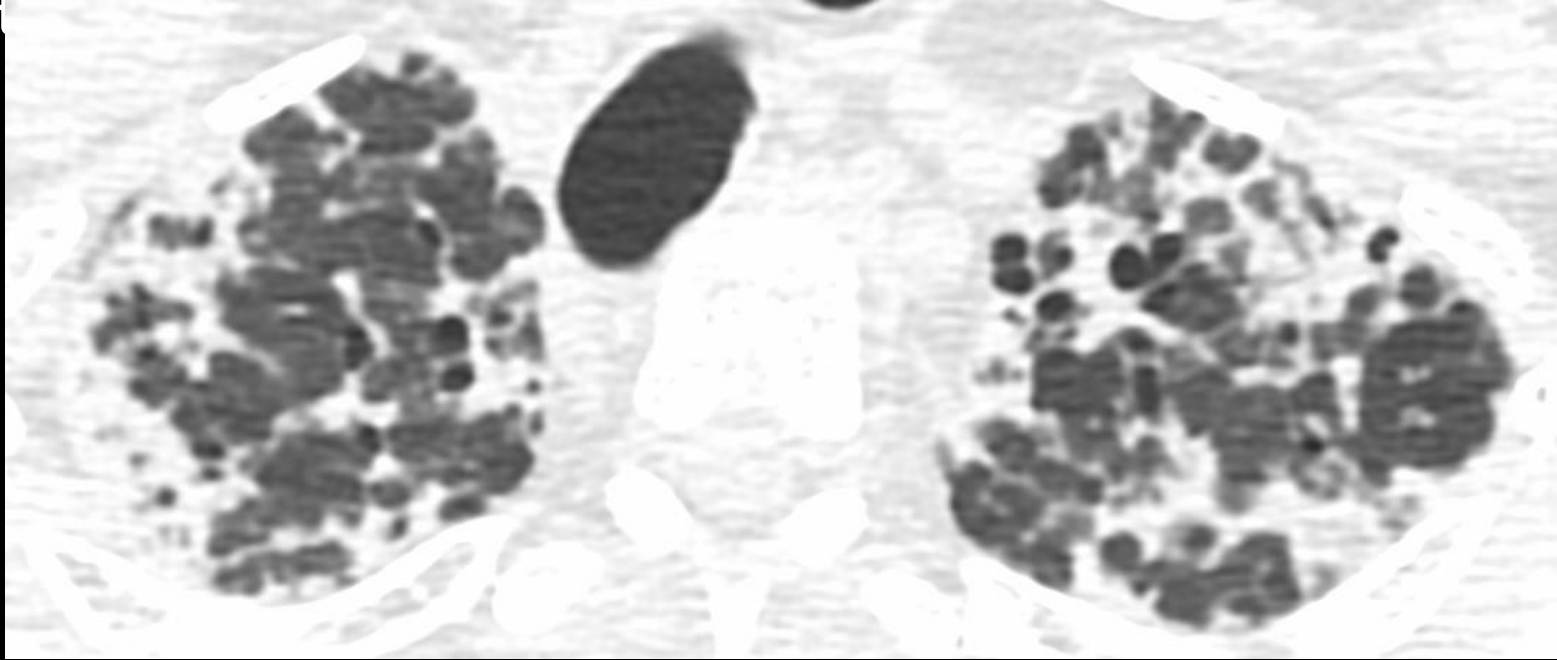
3
years

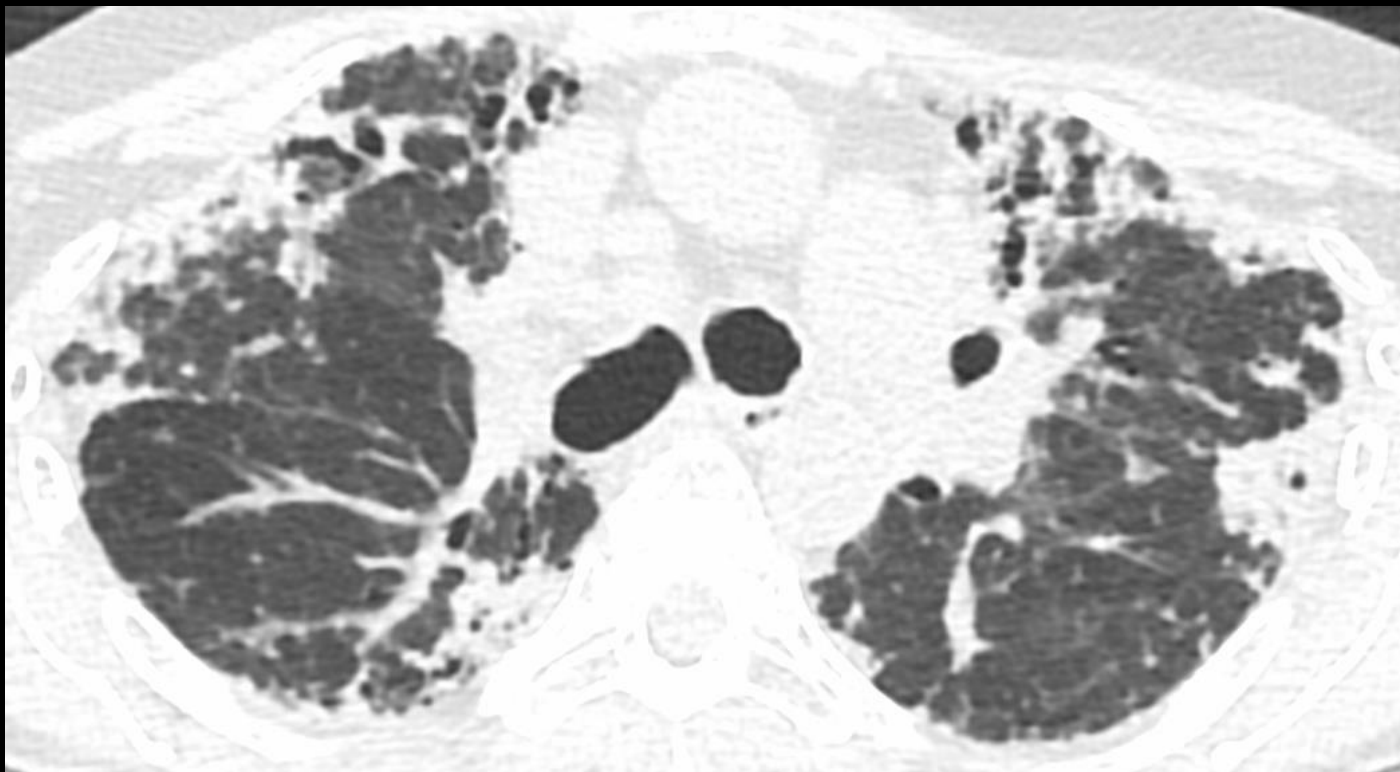


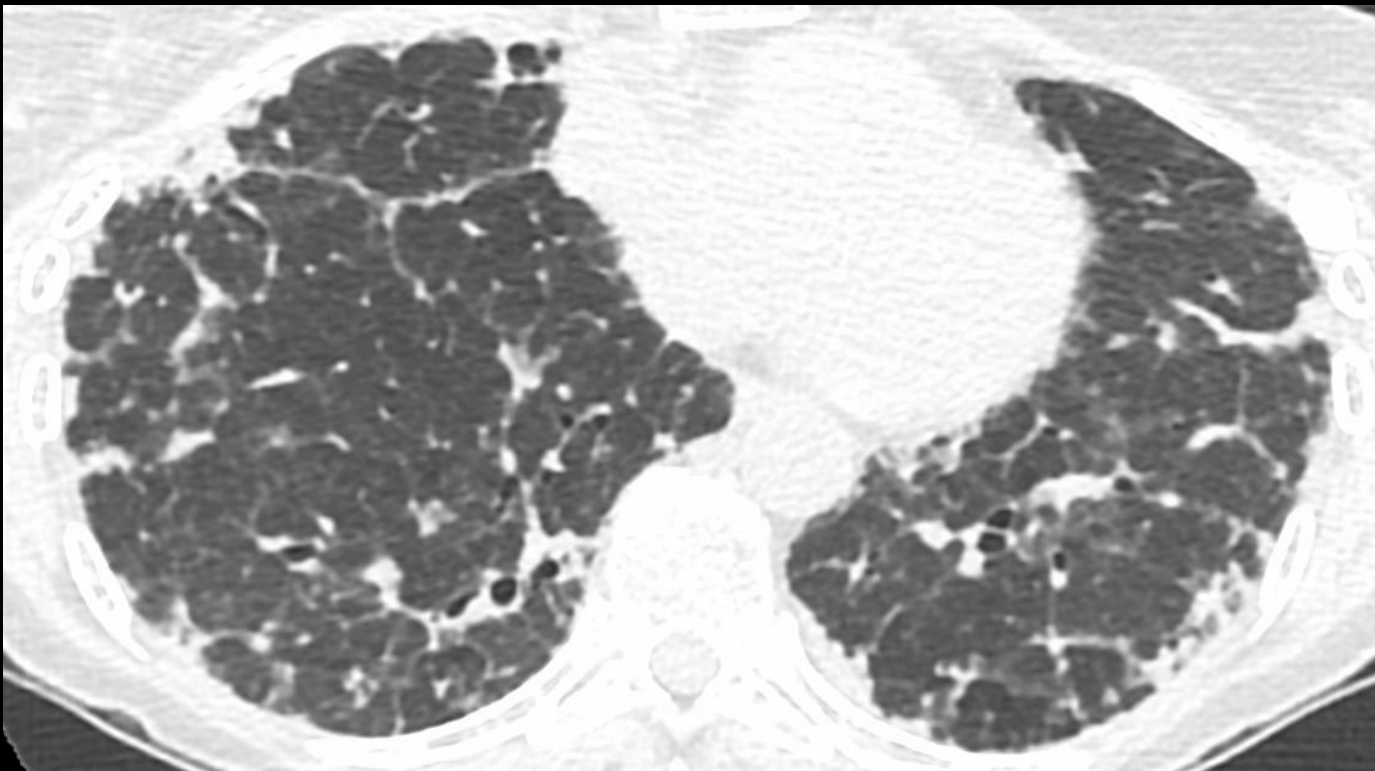
5
years

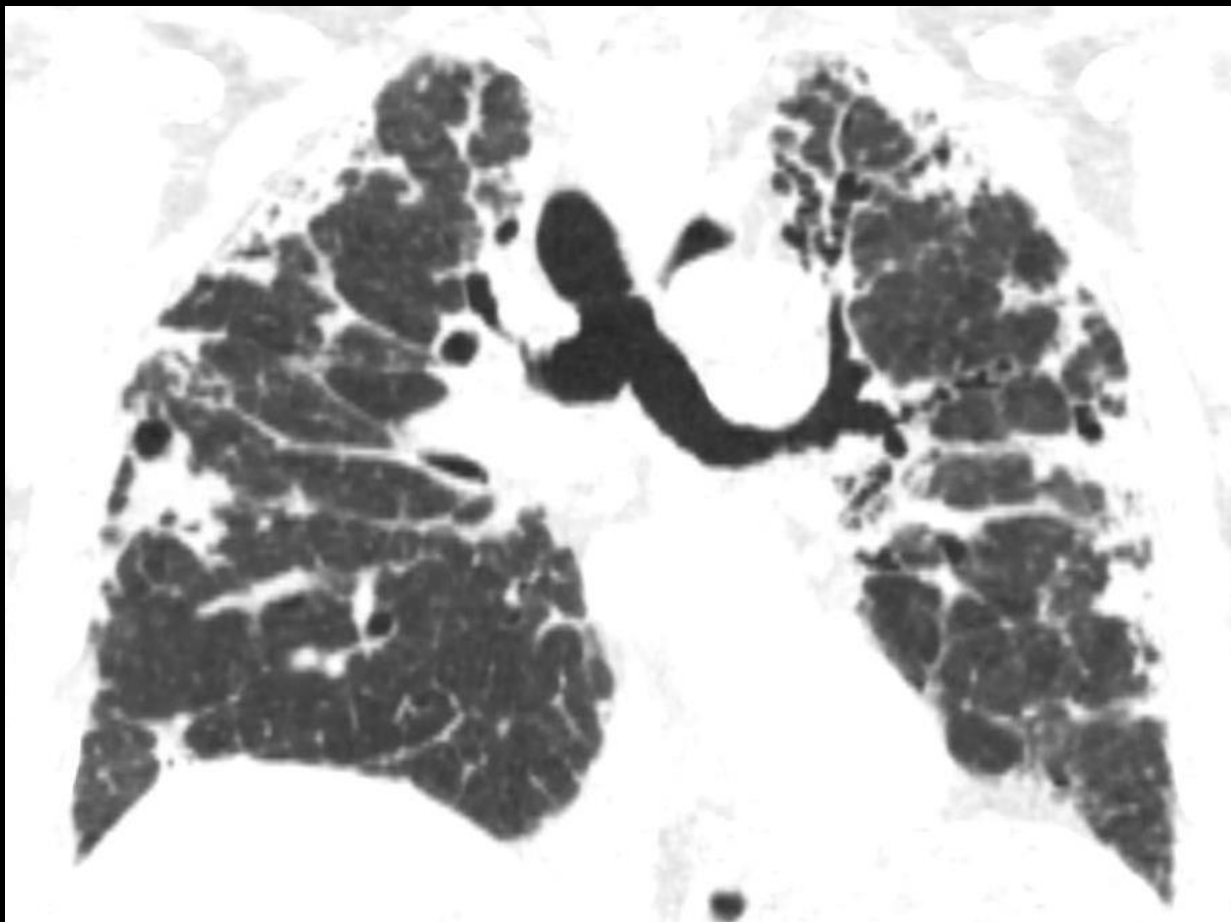


CT's 5
years after
1st exam



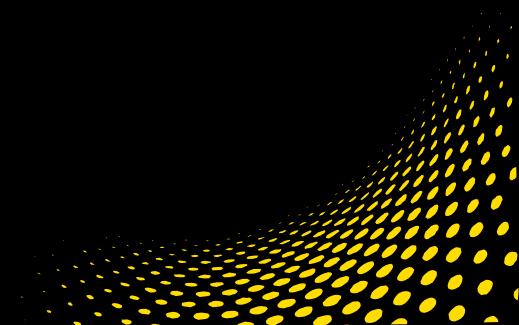


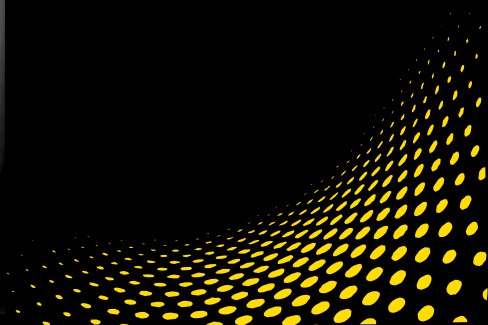




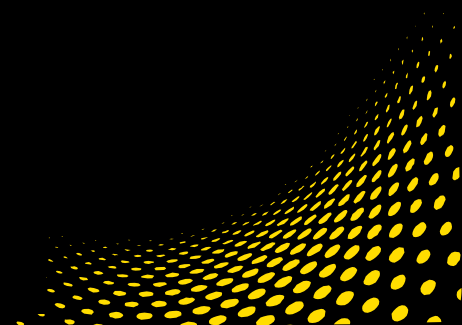
Chest Case #2

21-year-old female



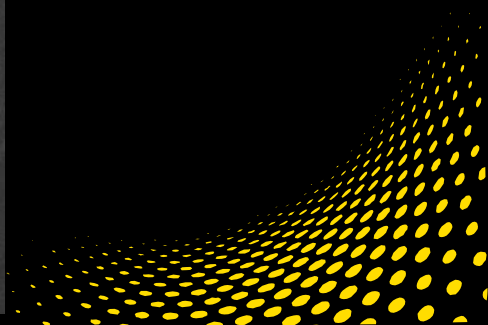


LET





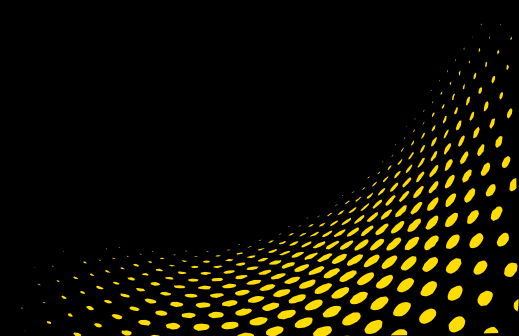


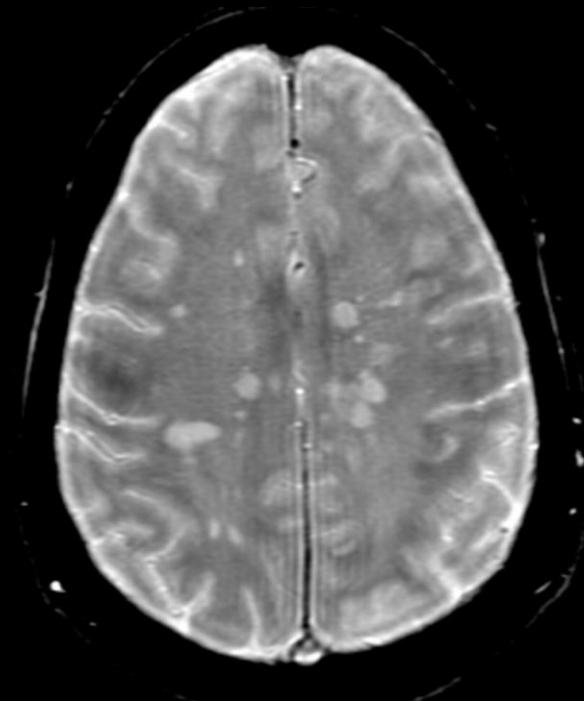
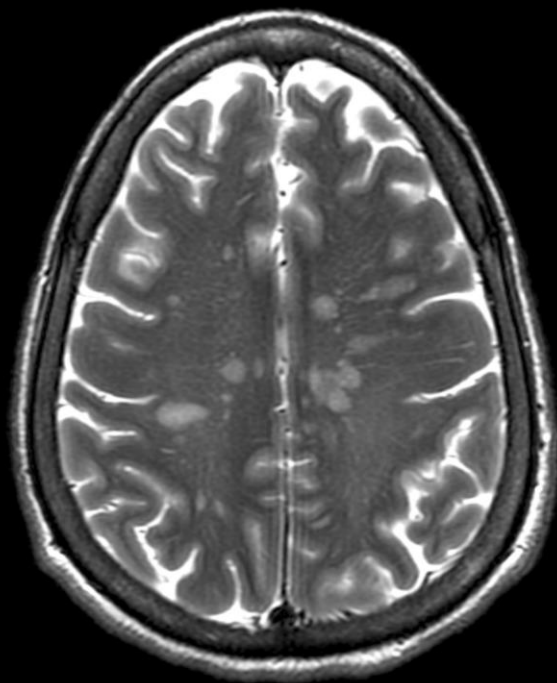
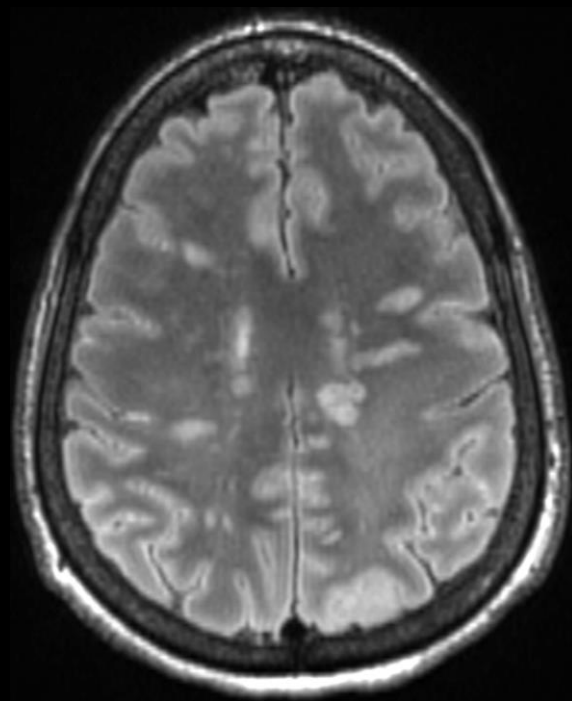


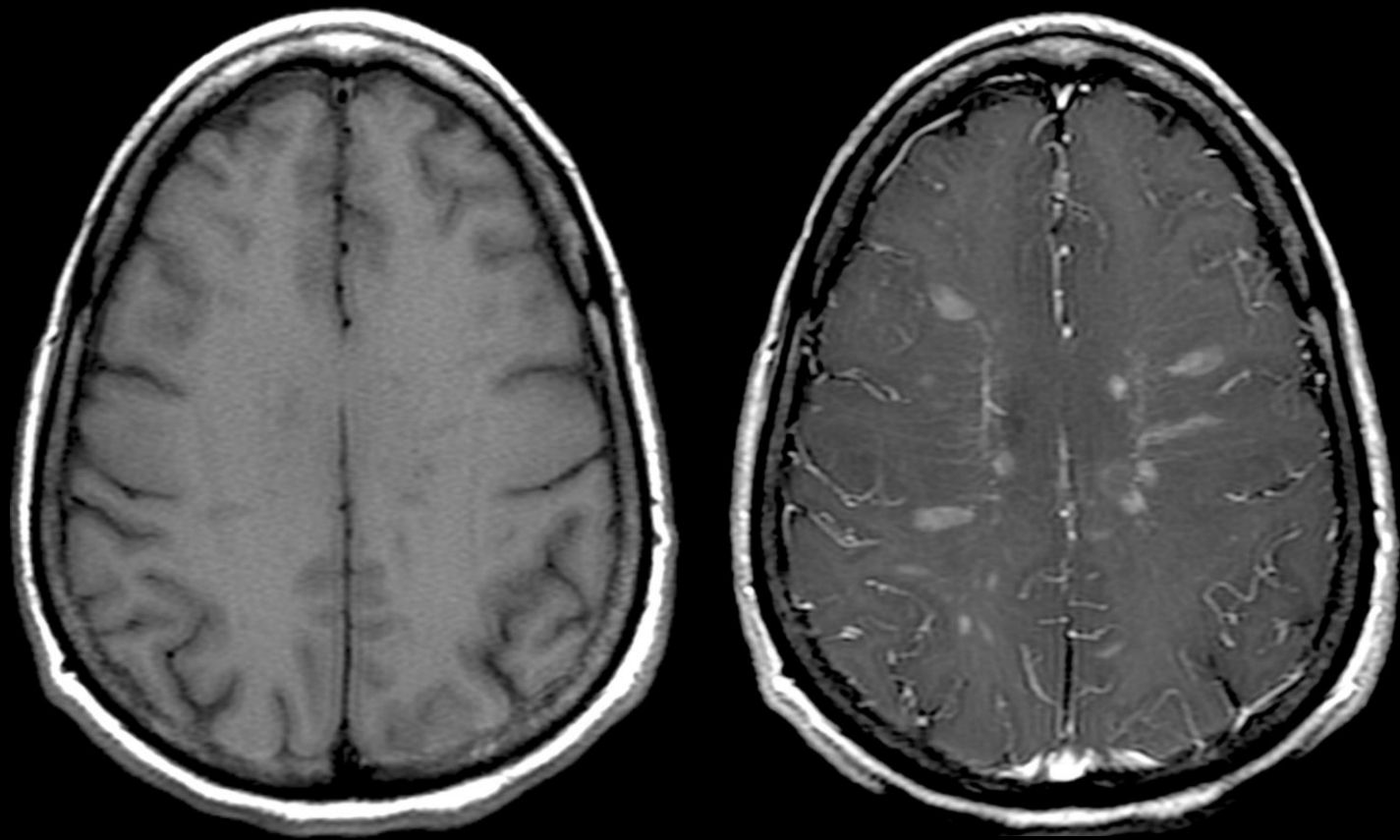
Neuroradiology Case #1

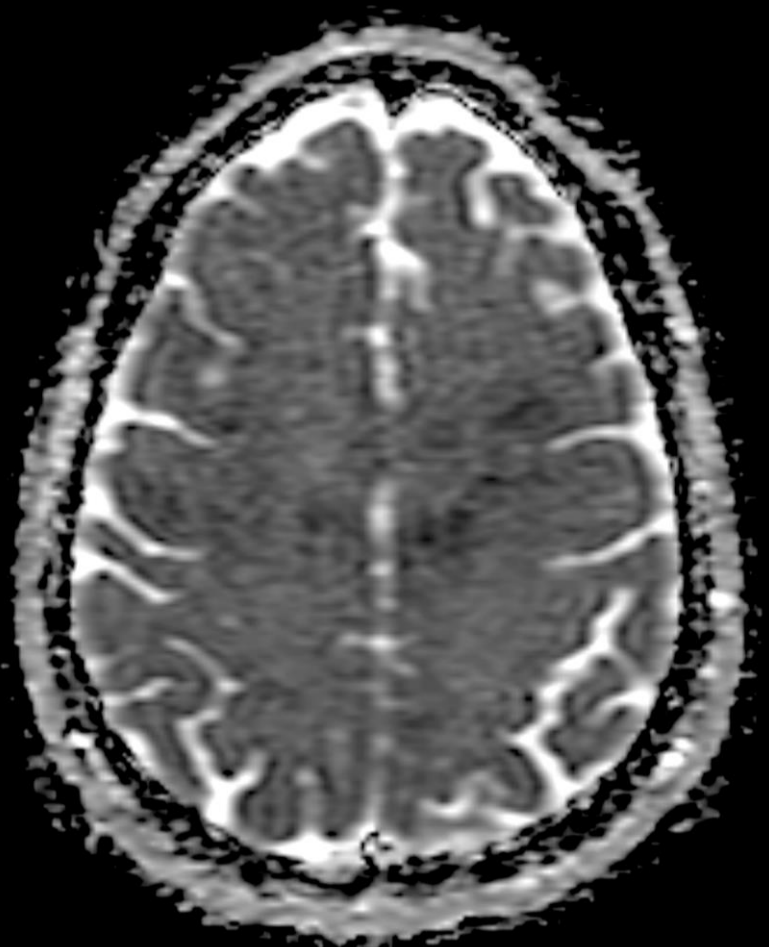
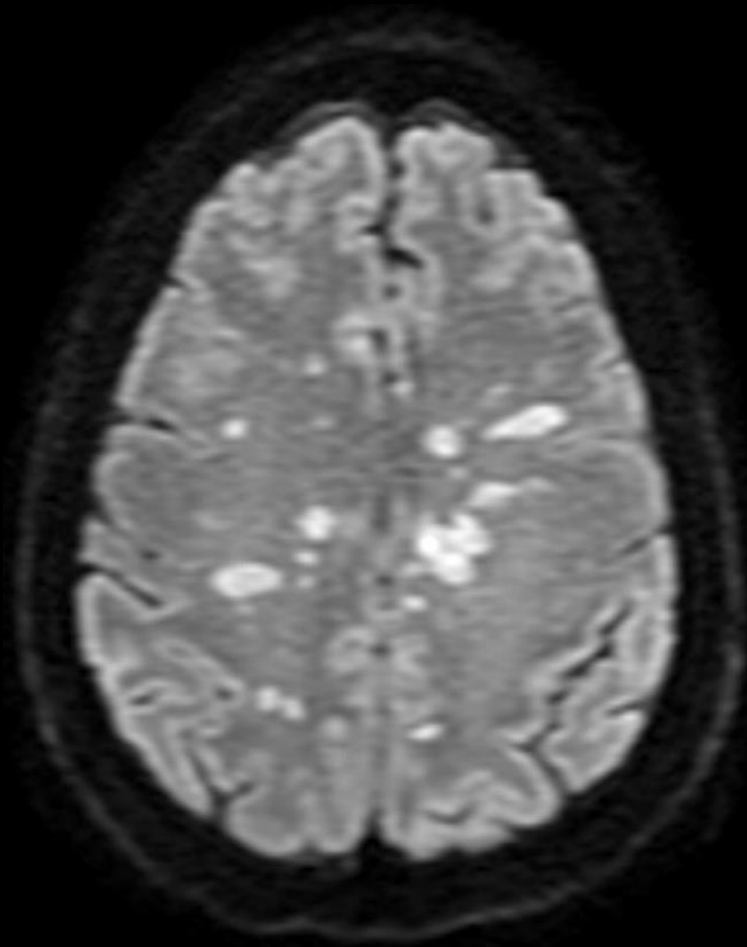
60-year-old with altered
mental status developing
over 2 weeks. Urine
positive for cocaine, CSF
shows lymphocytic
pleocytosis

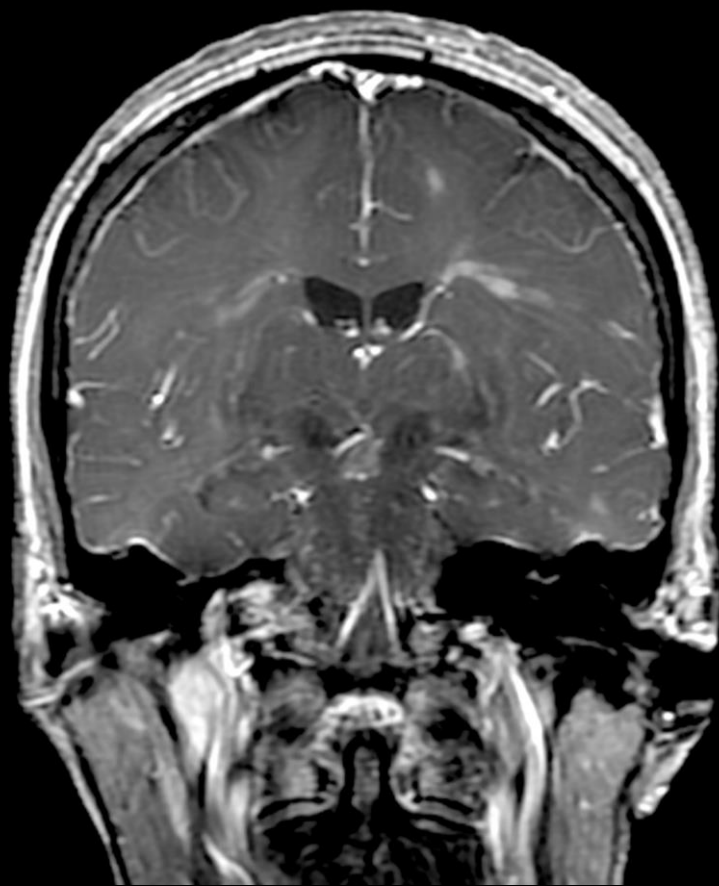
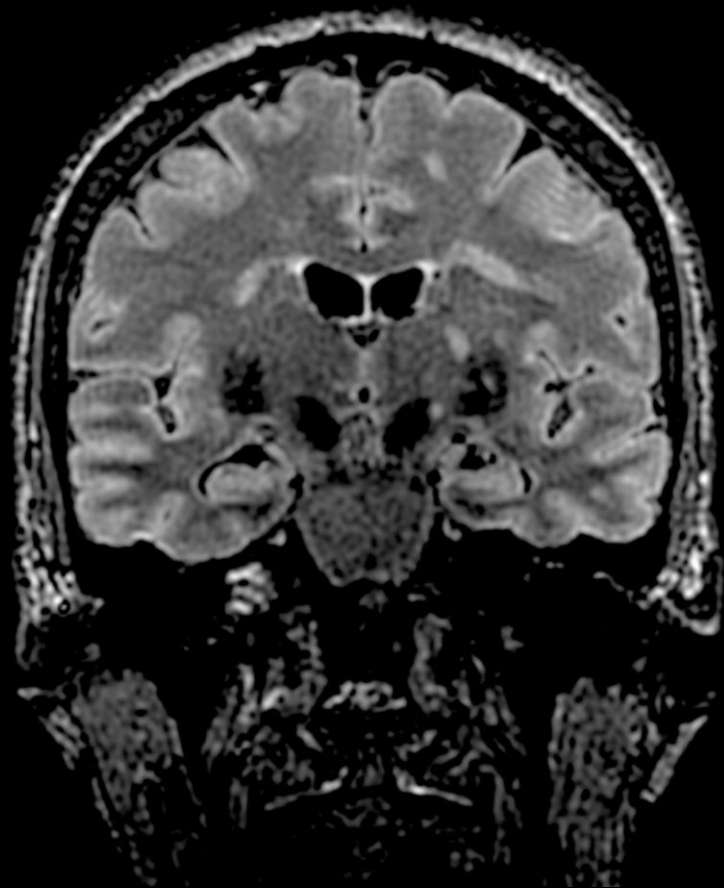


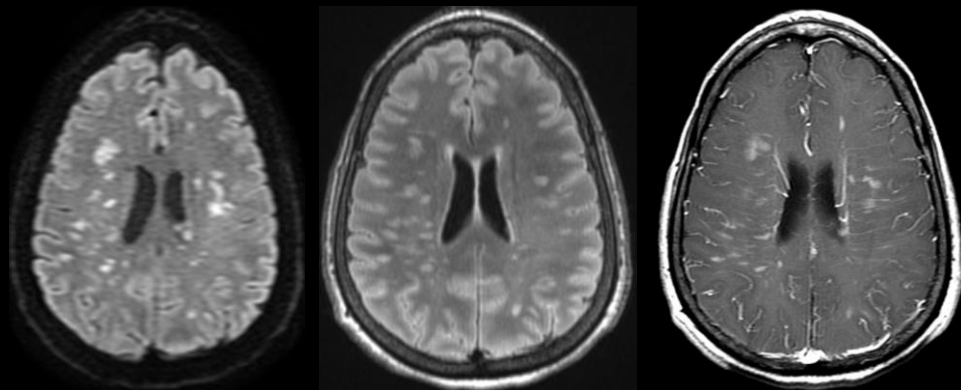




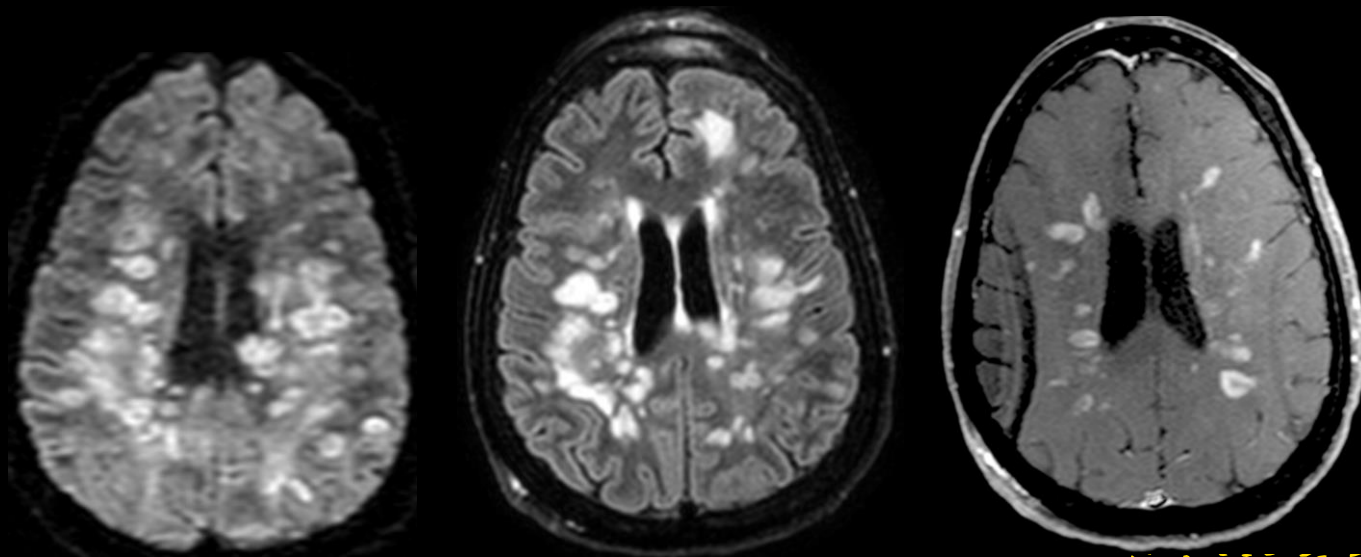








1 week
later...



Neuroradiology Case #2

46-year-old woman with refractory seizures and right hemiparesis since early childhood. Recent declining vision, mild hematuria on screening urinalysis. Family

